



NOAA's Beacon Registration Database (RGDB)

SARSAT Beacon Manufacturers Workshop

May 8, 2026

Apurve Mathur

Entarian

Registration Database Lead

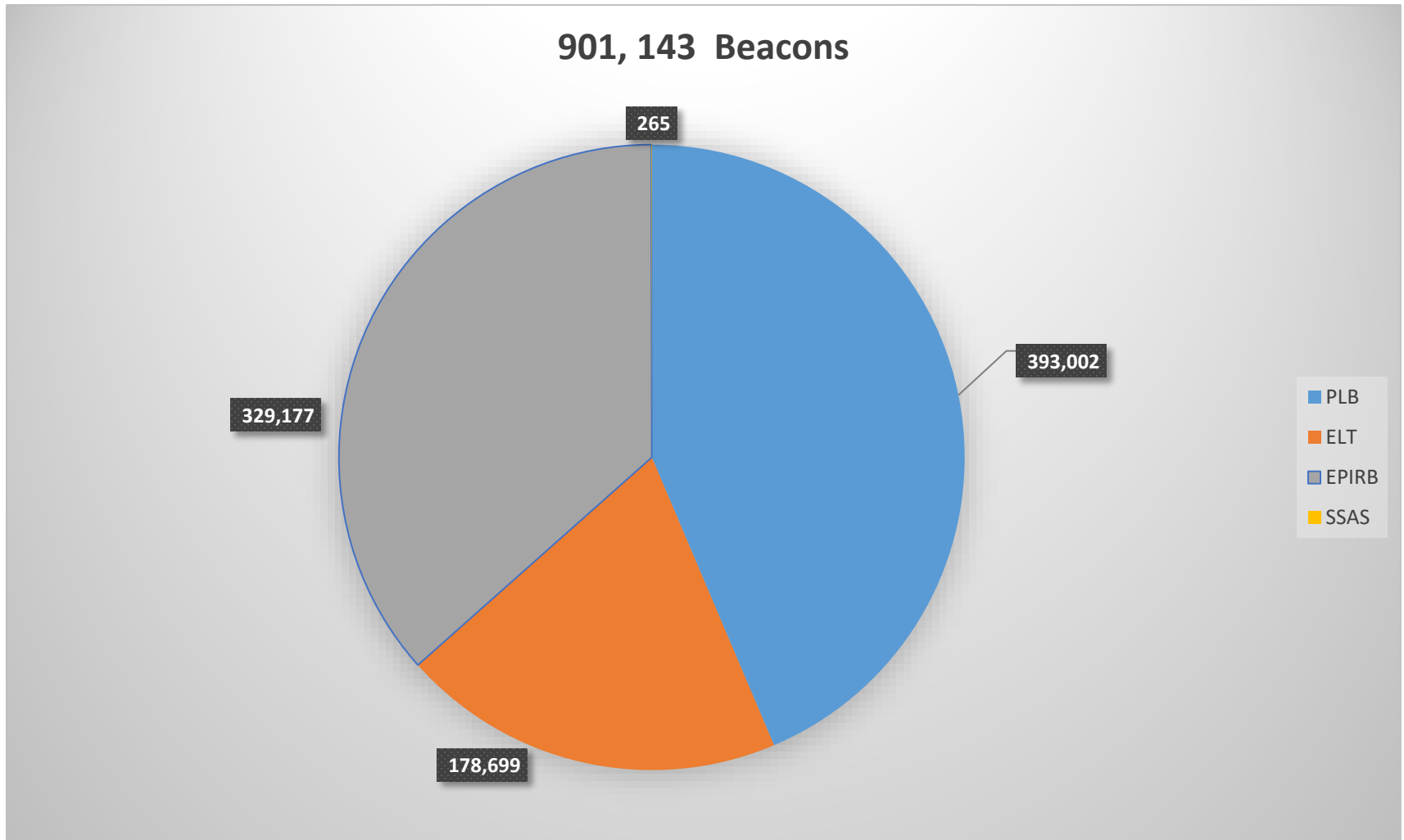




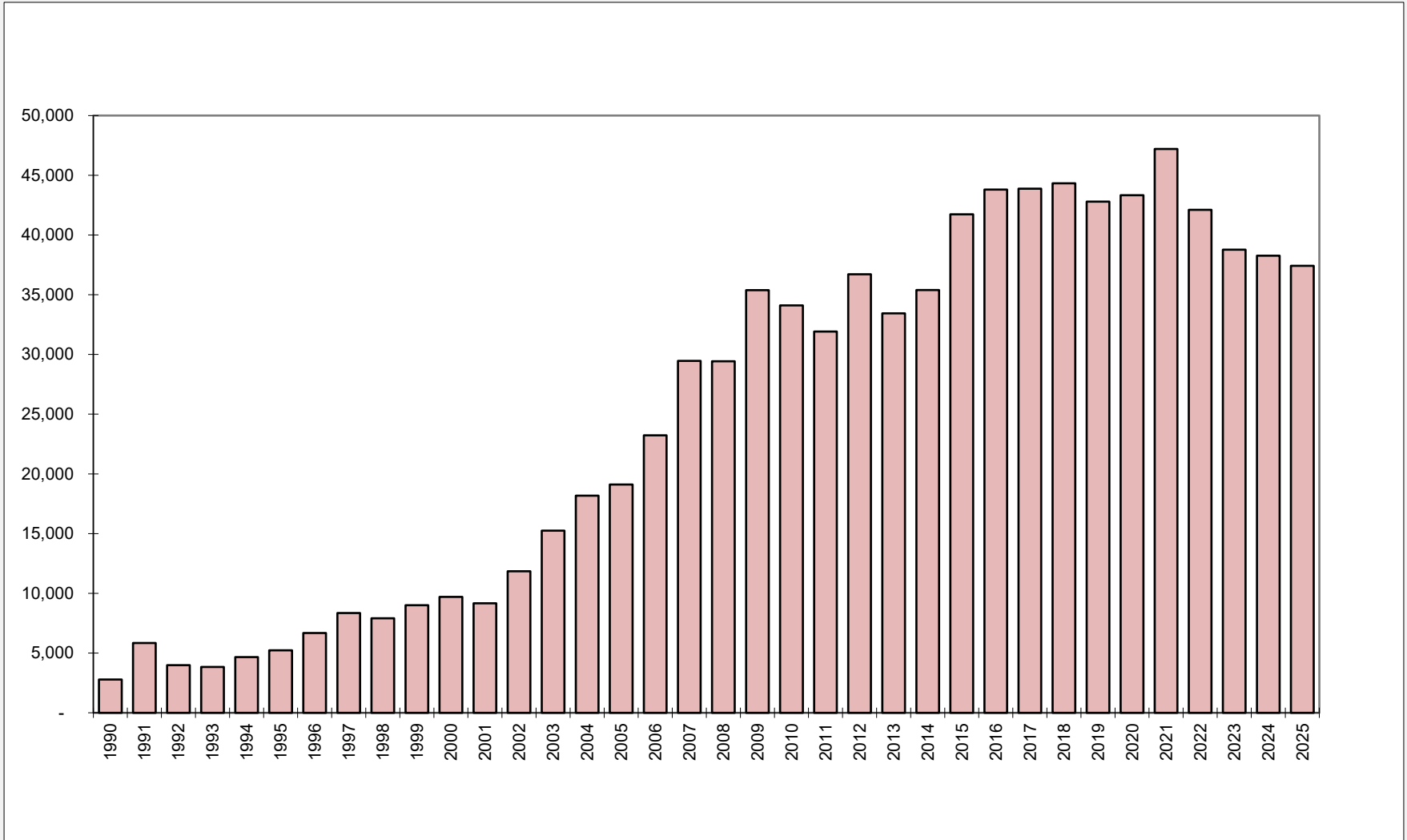
Topics That Will Be Covered

- RGDB Statistics
- False Alert Statistics
- Registration Forms and Beacon Labeling
- Beacon Servicing
- Beacon Hex ID Errors and Beacon Recalls
- Beacon Disposal

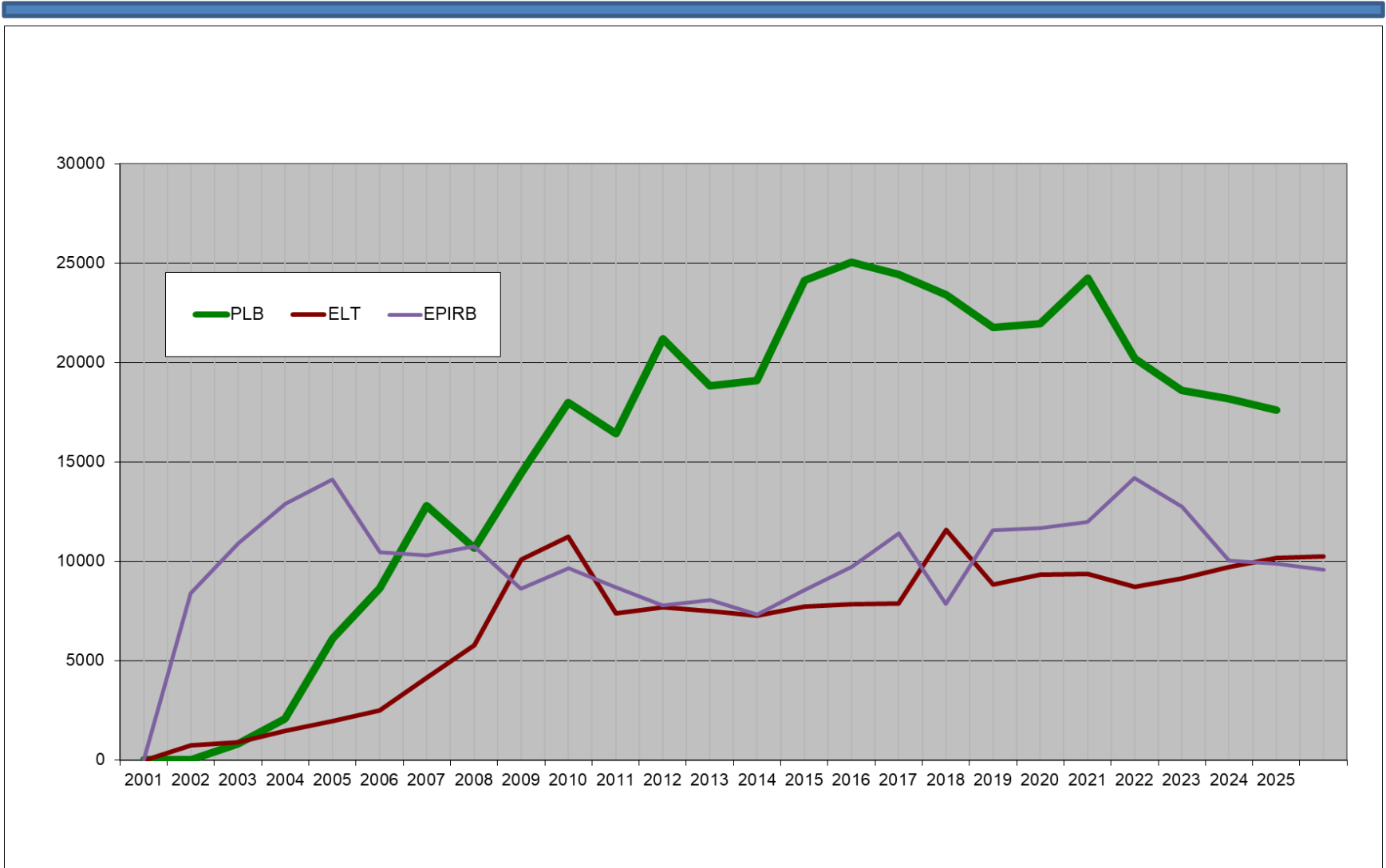
Registered Beacons by Beacon Type (Current to Mar 2026)



New Registrations by Year (1990 - 2025)

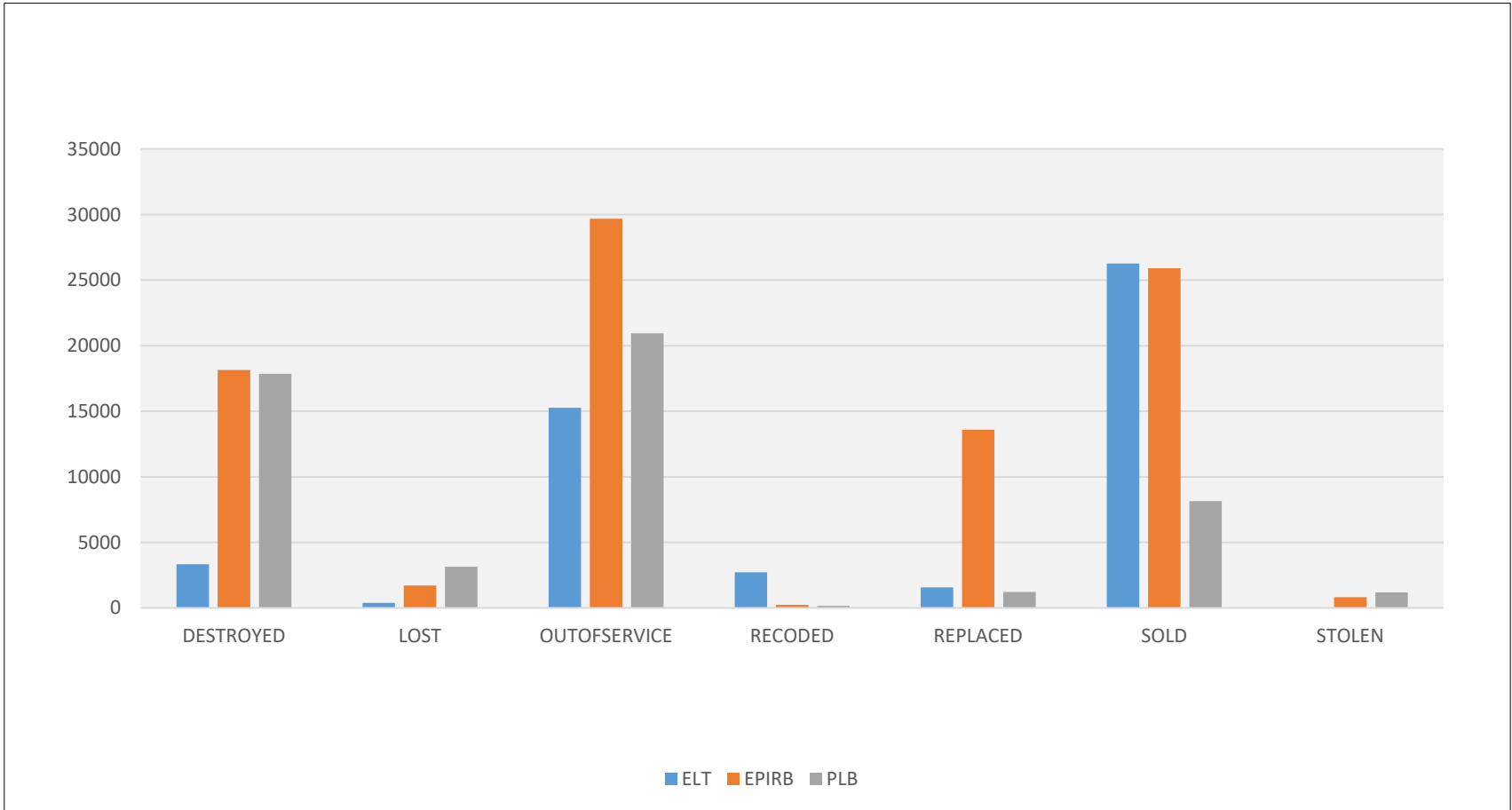


New Registrations by Type (2001 – 2025)





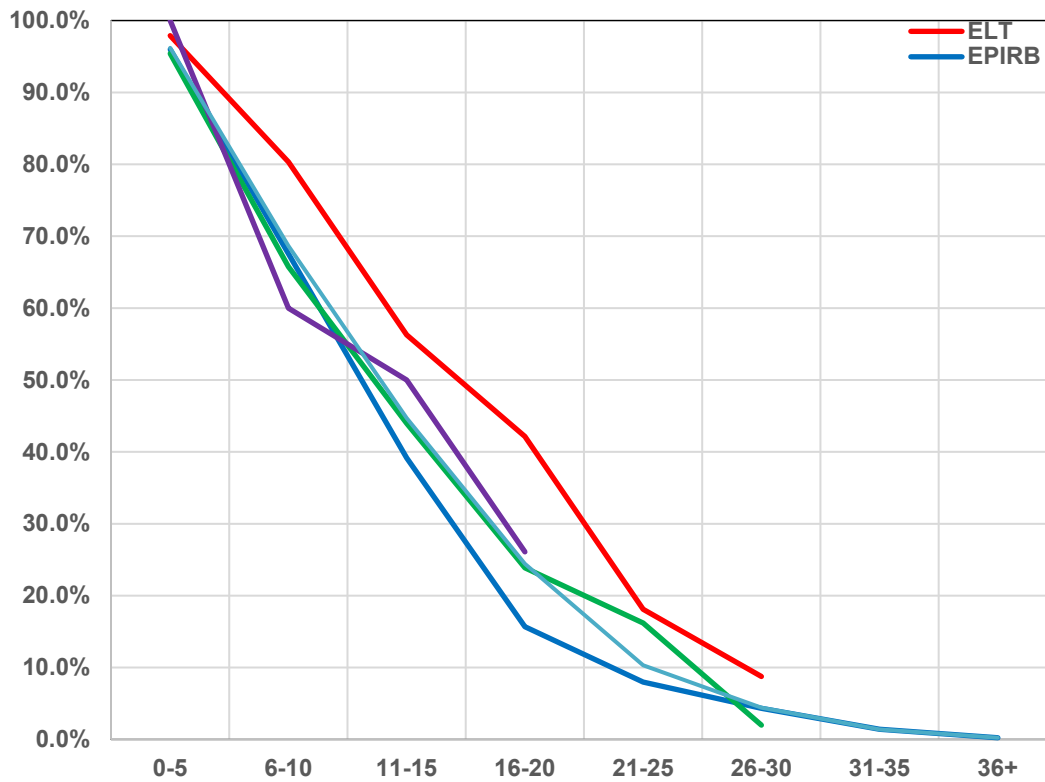
Special Status Beacons



Registration Renewal/Currency – by Beacon Type



Active Beacon Registration Rate by Age
(5-year Bins)



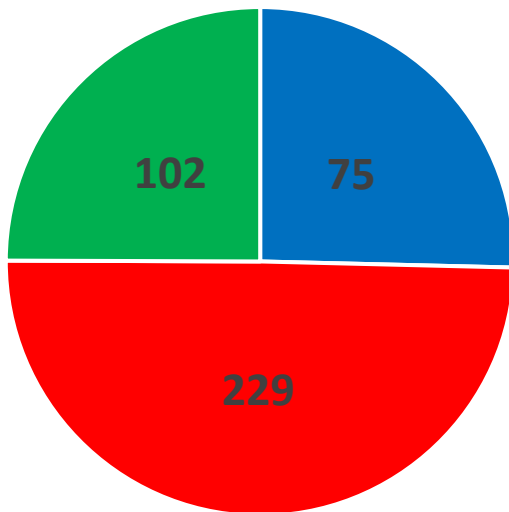
Of beacons first registered in the last 5 years,
 97.9% of ELTs
 96.0% of EPIRBs
 95.4% of PLBs
 have been updated/renewed within
 the past 2 years.

	Current Registrations by Bin			
	0-5	6-10	11-15	16-20
ELT	55,307	24,381	10,200	6,833
EPIRB	65,163	34,719	10,966	4,719
PLB	97,817	68,234	33,092	10,652
SSAS	2	3	8	6

2025 US Distress and False Alerts by Beacon Type



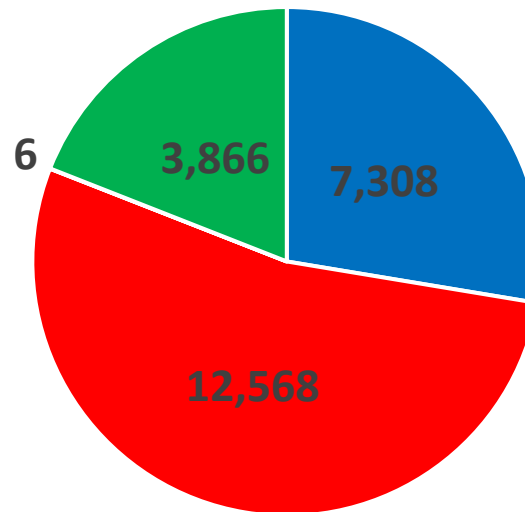
Distress Alerts
(406 Total)



■ EPIRB ■ ELT* ■ PLB

*There were no ELT-DT distress alerts in 2025

False/Non-Distress Alerts
(23,748 Total)

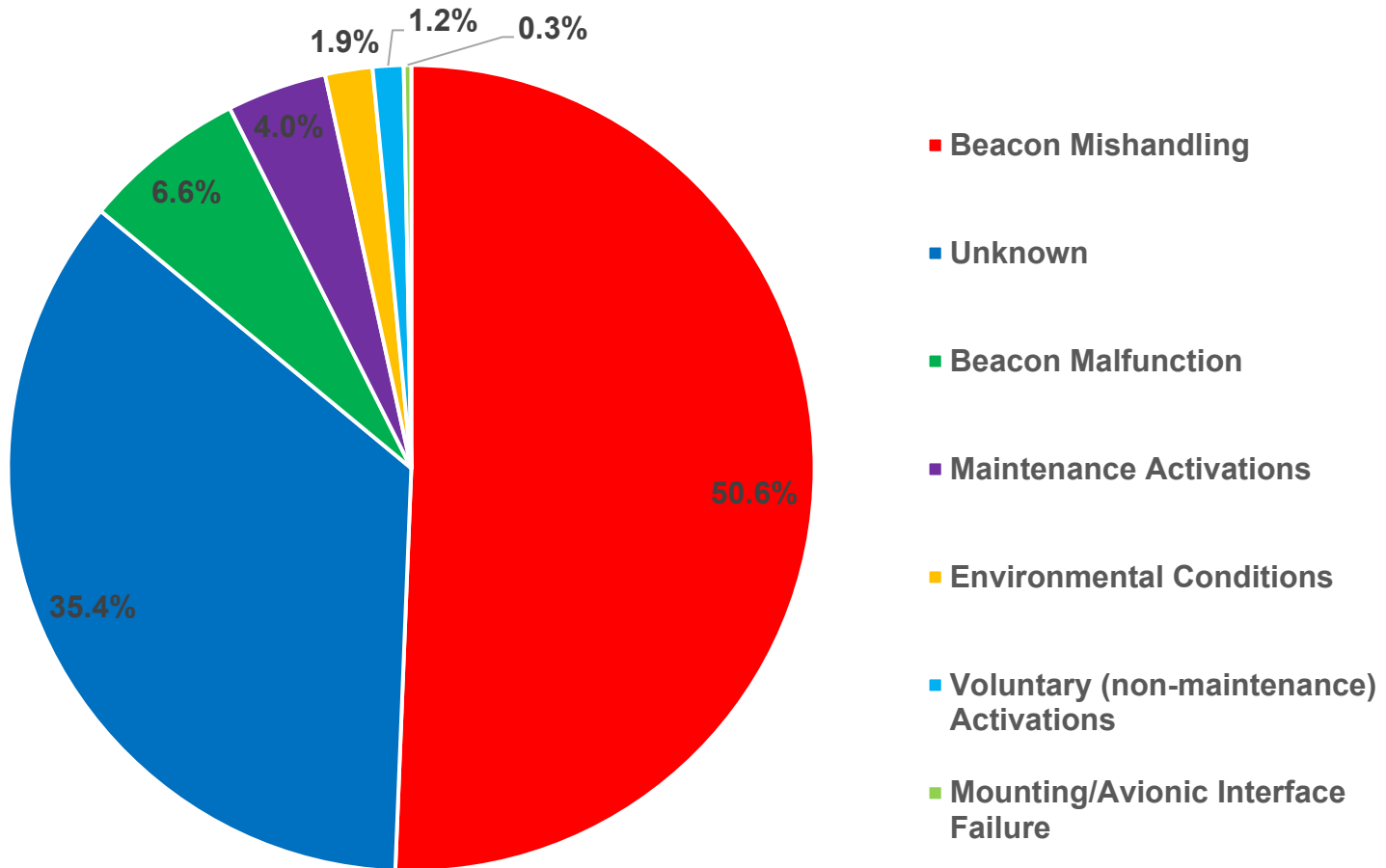


■ EPIRB ■ ELT ■ ELT-DT ■ PLB

False/non-distress alerts made up over 98% of all alerts processed by the USMCC in 2025



2025 US False Alerts by Cause





Access to RGDB Statistics

Registration statistics are available on the NOAA SARSAT website at:

www.sarsat.noaa.gov/statistics.html

This page:

- Shows a graph of the cumulative registered beacon counts by beacon type
- Provides a link to download a table showing first-time registrations by beacon type from April 2016 through the most recent month



Registration Forms and Beacon Labeling

Provide owners with **the latest** NOAA registration form, found at:

<https://beaconregistration.noaa.gov/RGDB/forms>

Affix a legible 15- or 23-hex label to the blank registration form and ensure that it matches the ID on the enclosed beacon. Follow these guidelines when creating your beacon labels:

- Use a large size font so the 15- or 23-hex ID is legible. Small fonts promote errors, particularly when a registration is submitted to NOAA by fax.
- A font such as Consolas helps owners distinguish between “0” and “D” and “8” and “B”:

0 1 2 3 4 5 6 7 8 9 A B C D E F

- Print 15- and 23-hex IDs in groupings (5-5-5 for 15-hex; 6-6-6-5 for 23-hex), with a space separating each group. This improves accuracy when completing a registration (see the sample top of a registration form on page 12).
- Include the model number, serial number, and checksum on the label.



Registration Form Hex ID Formats



Save time and register your beacon online at www.beaconregistration.noaa.gov

See instructions and additional information on separate page

Official 406 MHz PLB Registration Form

PLB Information (Enter either 15- OR 23-Hex ID)

15-Hex Beacon ID

--	--	--	--	--	--	--	--	--	--	--	--	--	--	--

(15-digit hexadecimal ID provided by the beacon manufacturer)

For manufacturer's use only

23-Hex Beacon ID

--	--	--	--	--	--	--	--	--	--	--	--	--	--	--	--	--	--	--	--

(23-digit hexadecimal ID provided by the beacon manufacturer)

Checksum (CHK)

--	--	--	--	--

Serial No. (S/N)

--	--	--	--	--	--	--	--	--	--	--	--	--	--	--	--	--	--	--	--

PLB Manufacturer

--	--	--	--	--	--	--	--	--	--	--	--	--	--	--	--	--	--	--	--

PLB Model

--	--	--	--	--	--	--	--	--	--	--	--	--	--	--	--	--	--	--	--

Purpose of PLB Registration

New/Change of Ownership

Replacement for previously registered beacon; enter old ID no. below:

Update/Renewal

Old 15-hex ID

--	--	--	--	--	--	--	--	--	--	--	--	--	--	--

Old 23-hex ID

--	--	--	--	--	--	--	--	--	--	--	--	--	--	--	--	--	--	--	--



2026 Registration Form Changes (1 of 3)

- Updated beacon registration forms received OMB approval and were uploaded to the RGDB website on March 4, 2026
- Changes were made to the PLB form to allow beacon owners to provide vessel and aircraft data and home port location
- The instructions for completing beacon registration were updated to reflect changes and were expanded to 2 pages to improve readability
- All new forms include OMB authorization information in the bottom right corner; please only use forms that show the OMB expiration date **28FEB2029** and revision date **02/2026**



2026 Registration Form Changes (2 of 3)

Changes made to the General Use Data section of the PLB form:

- Added a line for the fields Vessel Name and Federal/State Registration No.
- Added a line for Home Port Marina/Dock, City, and State fields
- Added Airport Code, City, and State fields

Change made to the Vessel Information section of EPIRB and SSAS forms:

- Added a field for Iridium #



2026 Registration Form Changes (3 of 3)

Changes made to the "Instructions for Completing NOAA's Emergency Beacon Registration Form" :

- Information was reviewed and updated as necessary to reflect the changes made to the RGDB and registration forms
- Content was reorganized to clarify beacon-specific information

Each beacon registration form PDF file now consists of 4 pages:

- Beacon-specific registration information (page 1)
- Important Notice—Please Read Before Completing Your Registration (page 2)
- Instructions for Completing NOAA's Emergency Beacon Registration Form (pages 3 and 4)



PLB Form General Use Data Section Updates

General Use Data

USAGE: Private/Non-Commercial Commercial Government/Military Government/Non-Military

SPECIFIC USAGE: Hiking Hunting Fishing Other _____

VEHICLE TYPE: Land Vehicle Boat Aircraft None Other _____

If Boat checked above, provide: Radio Call Sign _____ Vessel MMSI # _____ AIS MMSI # _____

Vessel Name _____ Federal/State Registration No. _____

Home Port Marina/Dock _____ City _____ ST _____

If Aircraft checked above, provide: Reg. (Tail) No. _____ Airport Code _____ City _____ ST _____

Additional Data – List areas you frequent and provide identifying information about your vehicle (e.g., model, colors, type of boat or aircraft)

- For PLB maritime use: added fields for vessel name, federal/state registration number, and home port marina/dock name, city, and state
- For PLB aviation use: added airport code, city, and state fields
- Updated the Additional Data instructions to suggest providing model, color, and type information for boat or aircraft



Beacon Servicing

- When servicing a beacon, check the NOAA decal registration expiration date and remind the owner to properly update/renew with NOAA if expired.
- When replacing a beacon, ensure the owner is aware that the *new* ID must be registered with NOAA and the old ID registration must be updated with the correct disposition information of the *old* beacon.
- Include a current registration form and instruction sheet with the new ID with all reprogrammed beacons.
- Inform the owner **in writing** that an ELT programmed with a 24-bit address or tail number ID must be reprogrammed if the tail number changes or the unit is moved to a different aircraft.



Authorized Service Centers

In the past, there have been issues with secondary beacon service providers and resellers that have resulted in duplicate and incorrect IDs. You can help by:

- Communicating currently allowed beacon programming protocols for each generation of beacon (e.g., MMSI protocol is not allowed for 1st generation US-coded beacons).
- Ensuring that centers have the most updated coding software.
- Implementing refresher training programs on reprogramming beacons.
- Developing a quality assurance program that includes the ability to monitor service center performance.



Hex ID Errors and Beacon Recalls

- To mitigate potentially serious problems, notify NOAA **immediately** of any of the following situations:
 1. Duplicate 15- or 23-hex IDs encoded into any beacons
 2. 15- or 23-hex ID errors on forms or beacons
 3. Beacon recalls
- NOAA may be able to help investigate or communicate any potential issues to beacon owners. ***The goal is to save lives.***



Beacon Disposal (NOAA)

Landfill/dumpster activations are an increasing problem for SAR forces. They occur when beacons are not disabled and are thrown away with their batteries still installed.

- The RGDB website provides information on disposal guidelines (<https://www.sarsat.noaa.gov/preventing-false-alerts>).
- NOAA communications highlight the importance of disposing a beacon according manufacturer guidelines and reference the online SARSAT disposal guidelines (<https://www.cospas-sarsat.int/en/beacon-ownership/disposal-of-old-beacons-and-old-batteries>).
- NOAA is considering adding disposal guidelines that would appear when an owner selects the “destroyed” status in their online registration.



Beacon Disposal (Manufacturers)

Beacon manufacturers play an important role in helping NOAA inform beacon owners about proper beacon disposal. Please consider:

- Sending us a list of the IDs for beacons you have received from owners and destroyed.
- Implementing a “buy-back” or “core-charge” incentive for current owners to turn in their old, unserviceable beacons.
- Partnering with sellers or establishing service centers in high-use areas (e.g., Miami, Cape Cod, The Hamptons) to help increase proper servicing and/or disposal of old beacons.
- Increasing the distribution of beacon registration forms and information to second-hand buyers.



Contact Information

Apurve Mathur
Entarian
Registration Database Lead

Apurve.Mathur@noaa.gov
301-817-4542