



**NOAA's *Online*
Beacon Registration Database
(RGDB)**

www.beaconregistration.noaa.gov

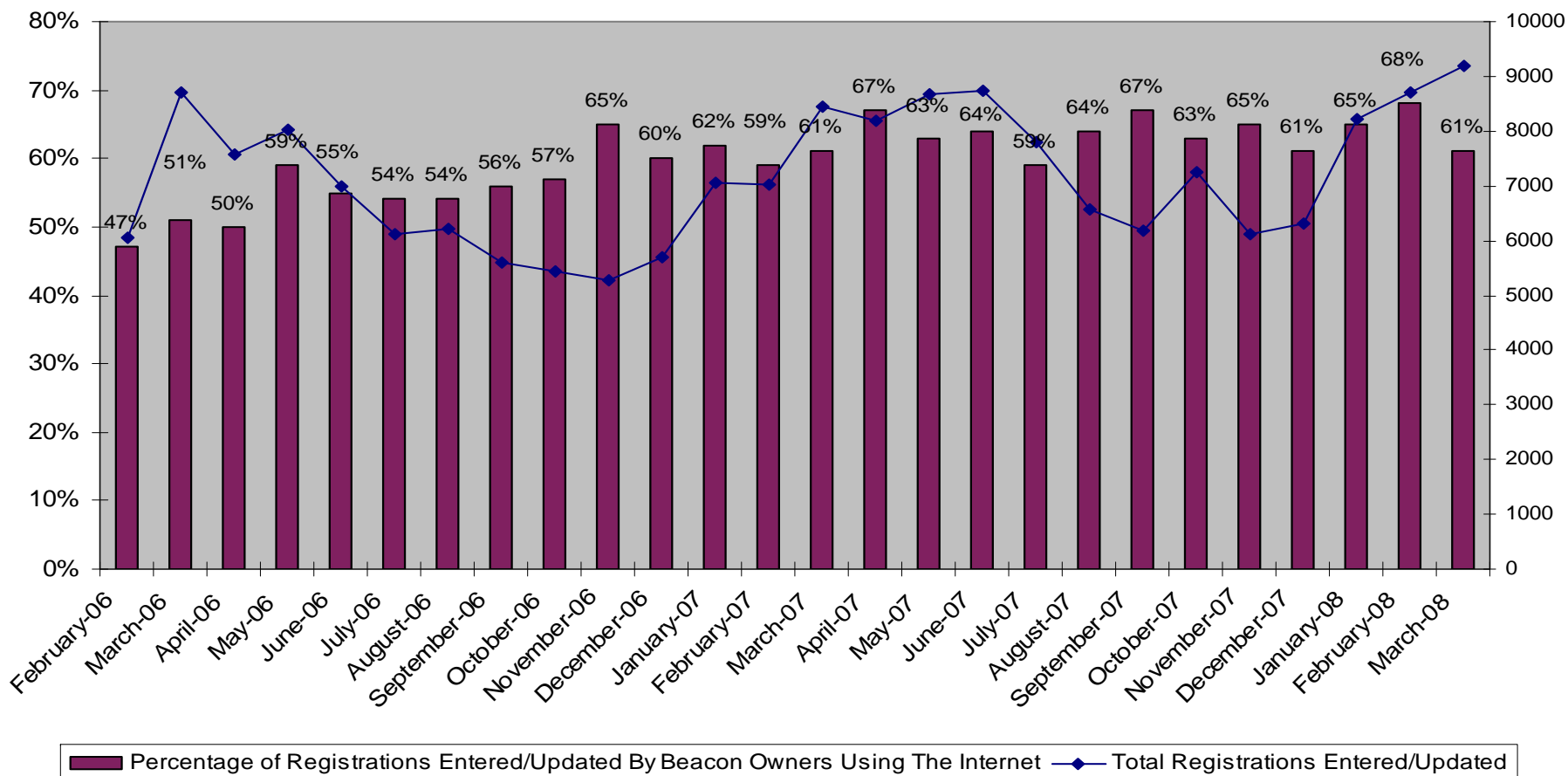
NOAA SARSAT PROGRAM



Online Usage Statistics



Registrations Entered/Updated For Periods Feb '06 to Mar '08

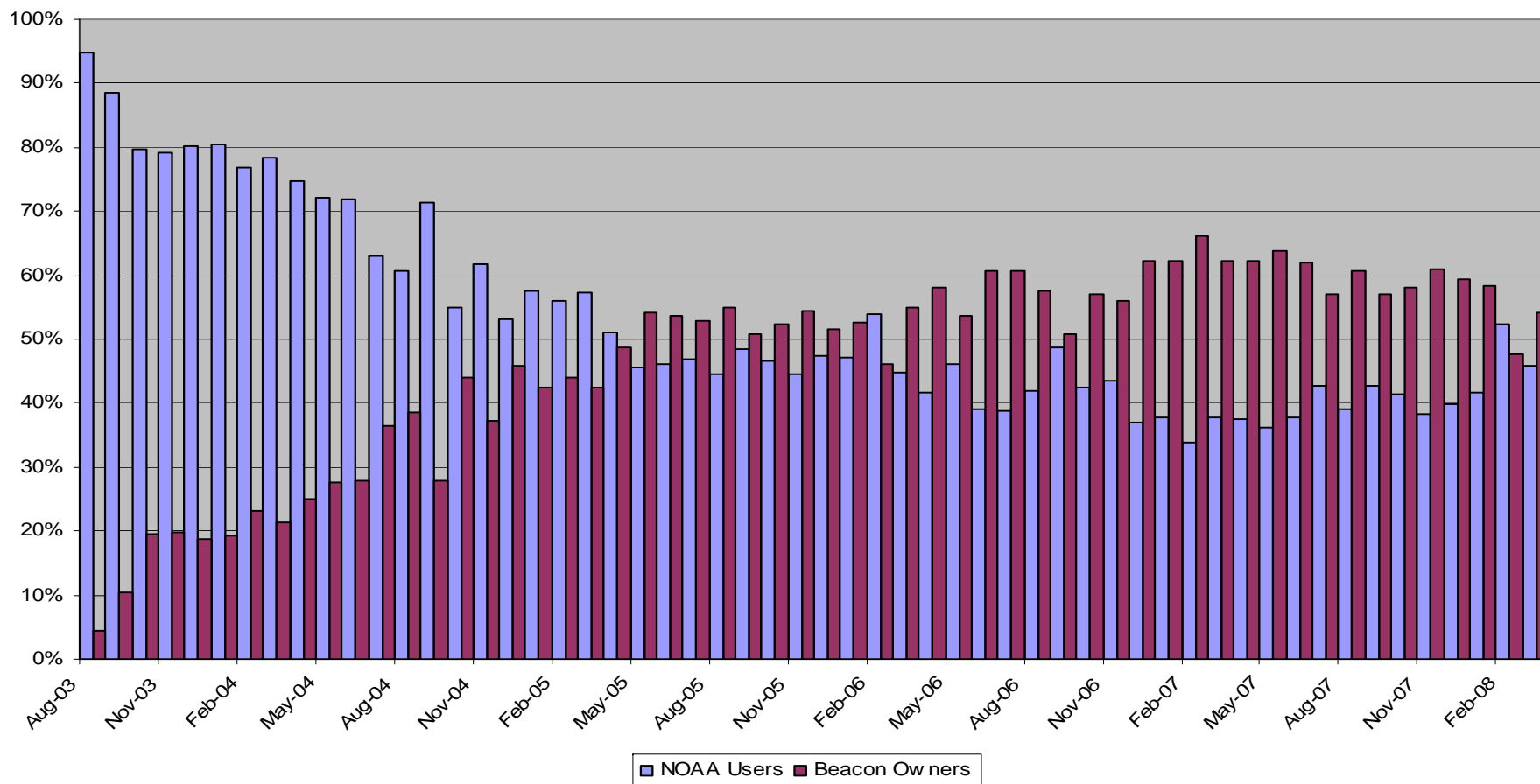




Initial Registrations By Users



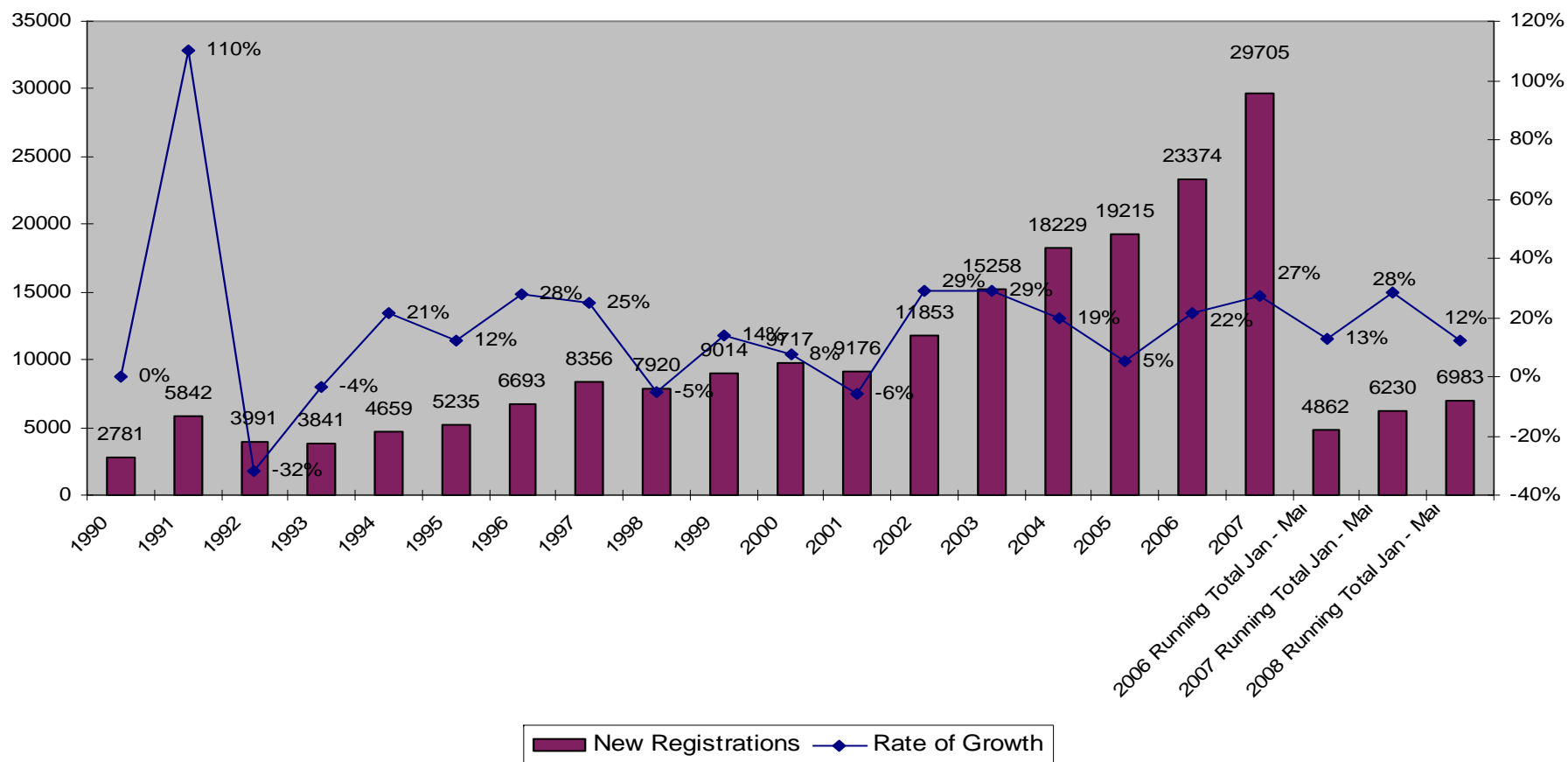
New Registrations By Users As of March, 2008





Analysis of Current RGDB

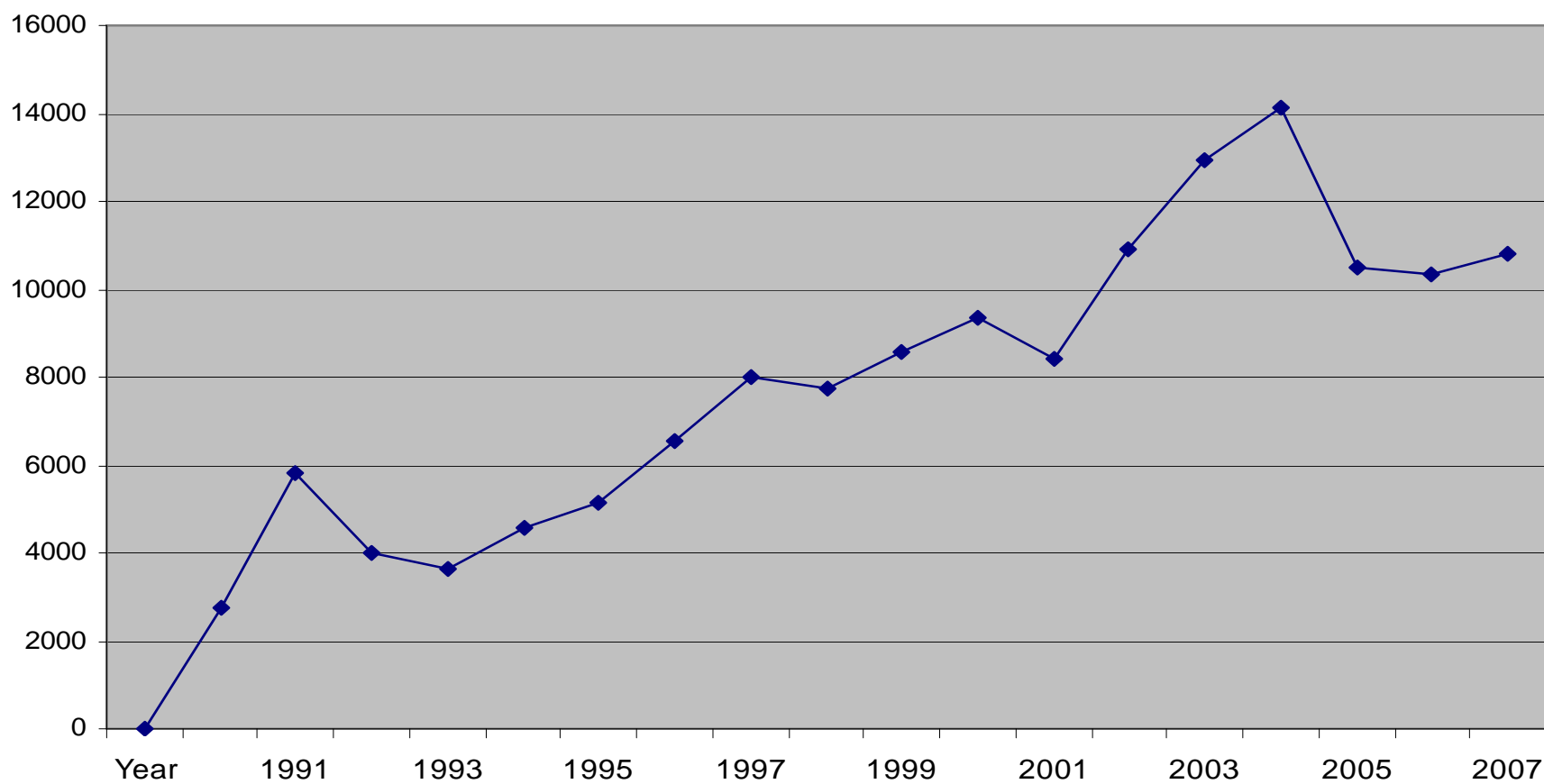
**New Registrations As Of
March, 2008**





Analysis of Current RGDB

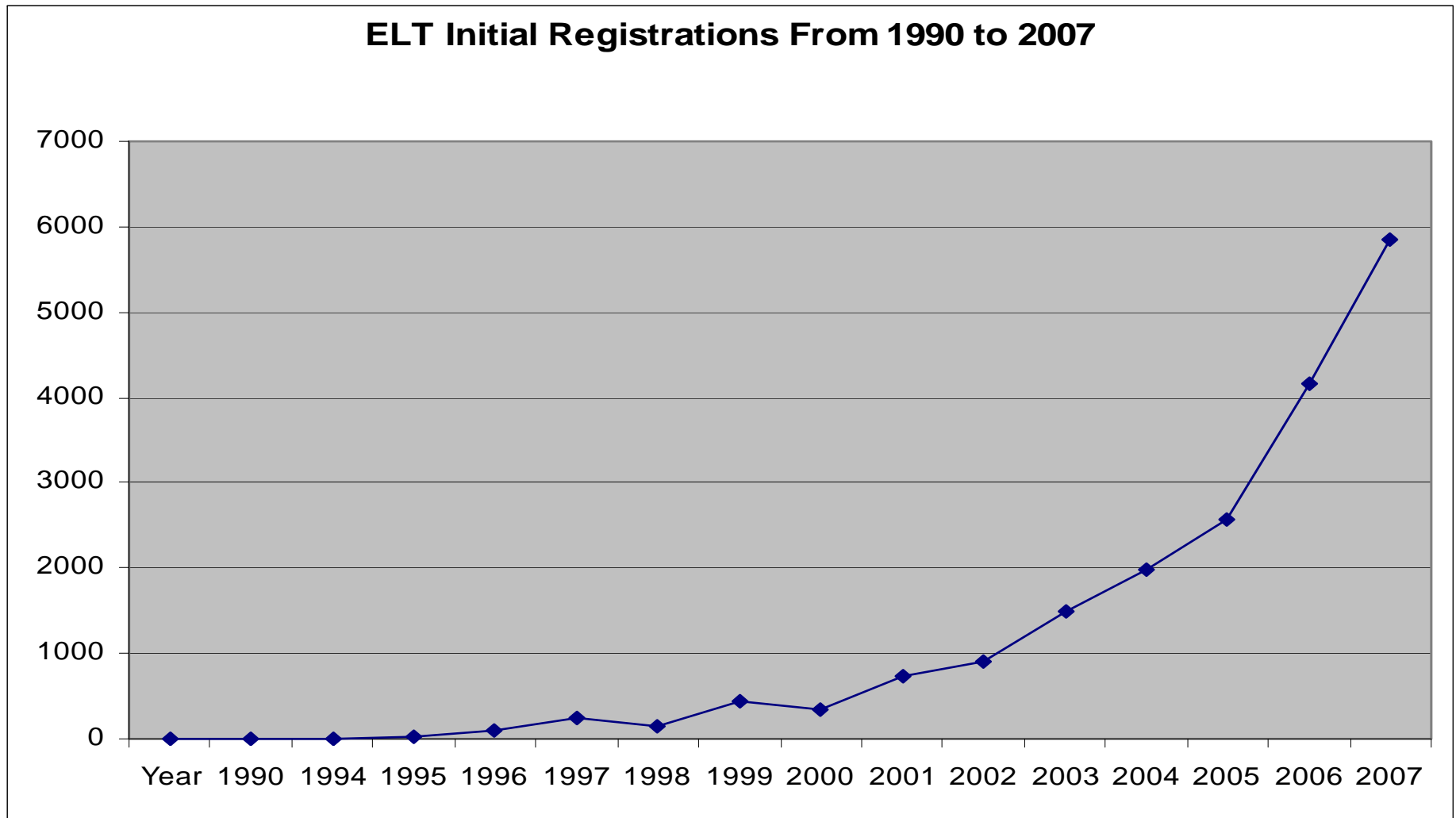
EPIRB Initial Registrations From 1990 to 2007



Analysis of Current RGDB



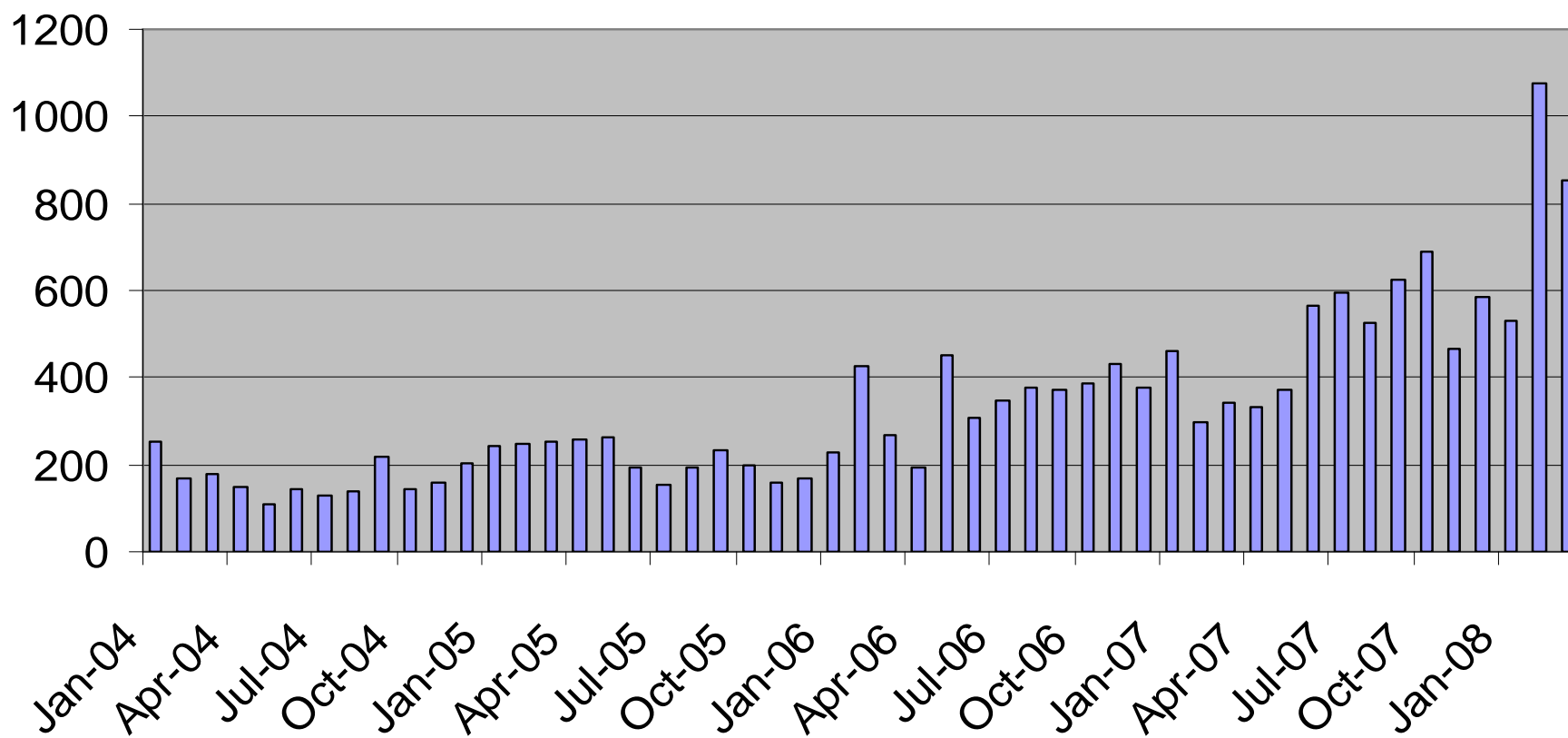
ELT Initial Registrations From 1990 to 2007





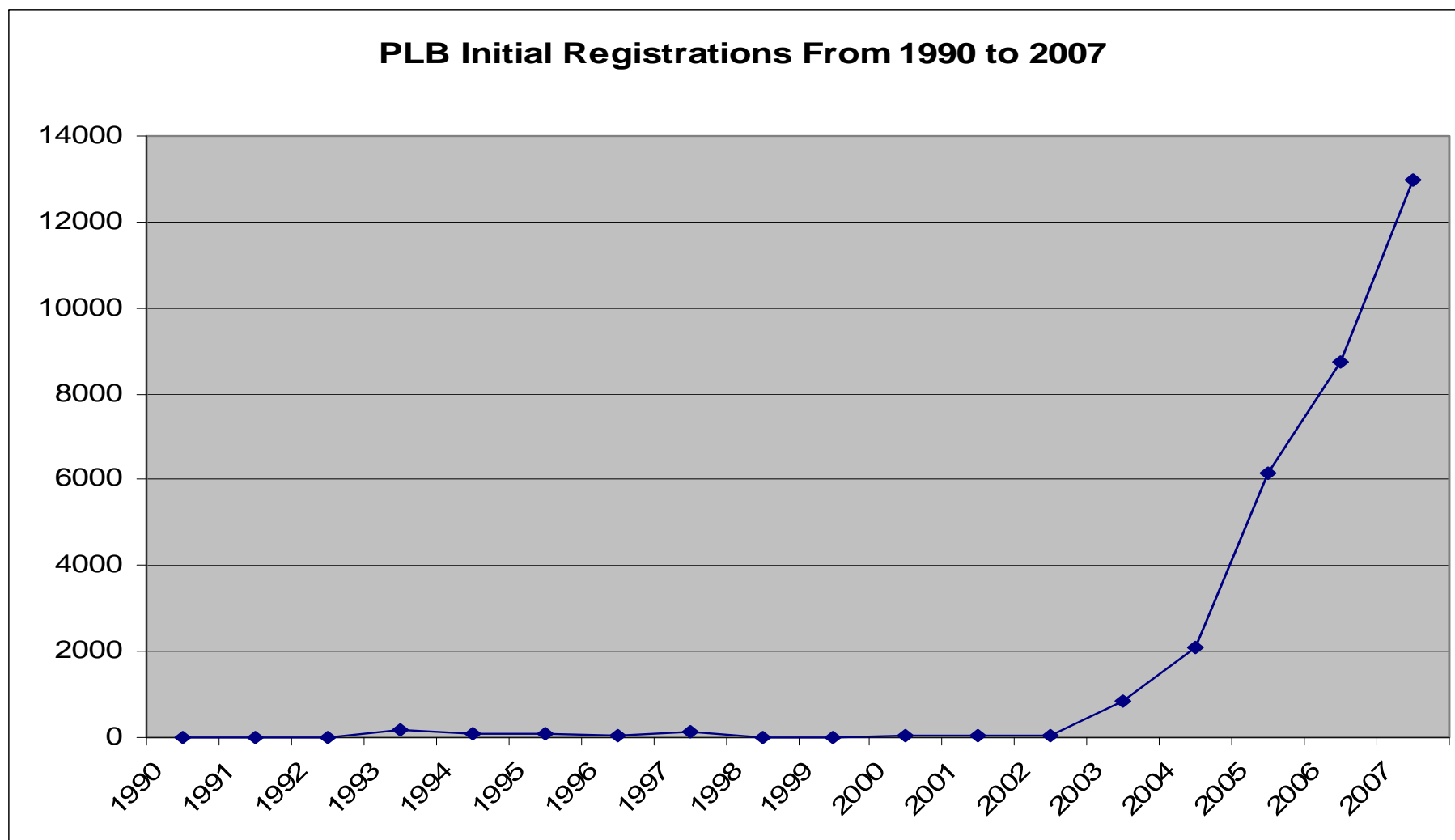
Analysis of Current RGDB

ELT Initial Registrations By Month





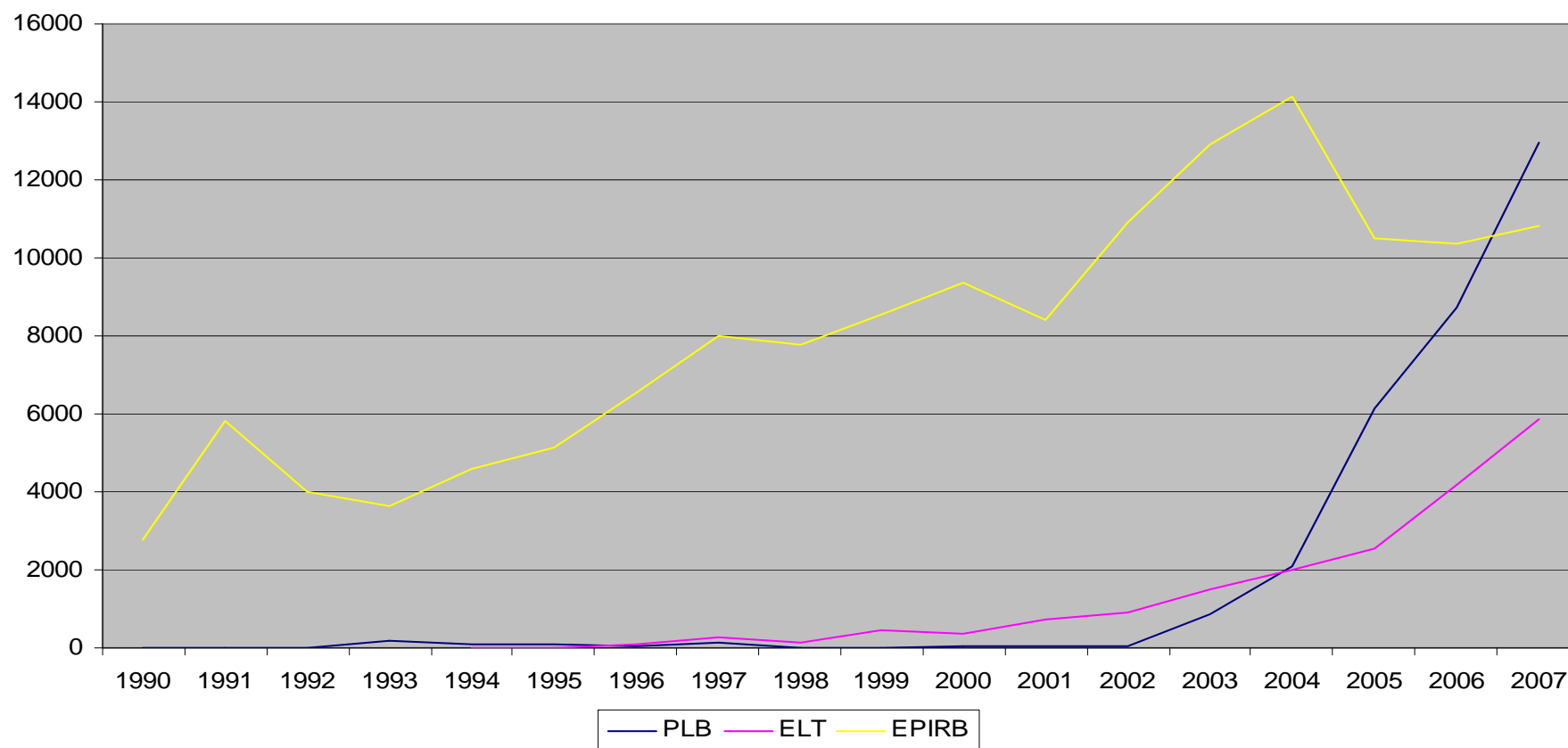
Analysis of Current RGDB





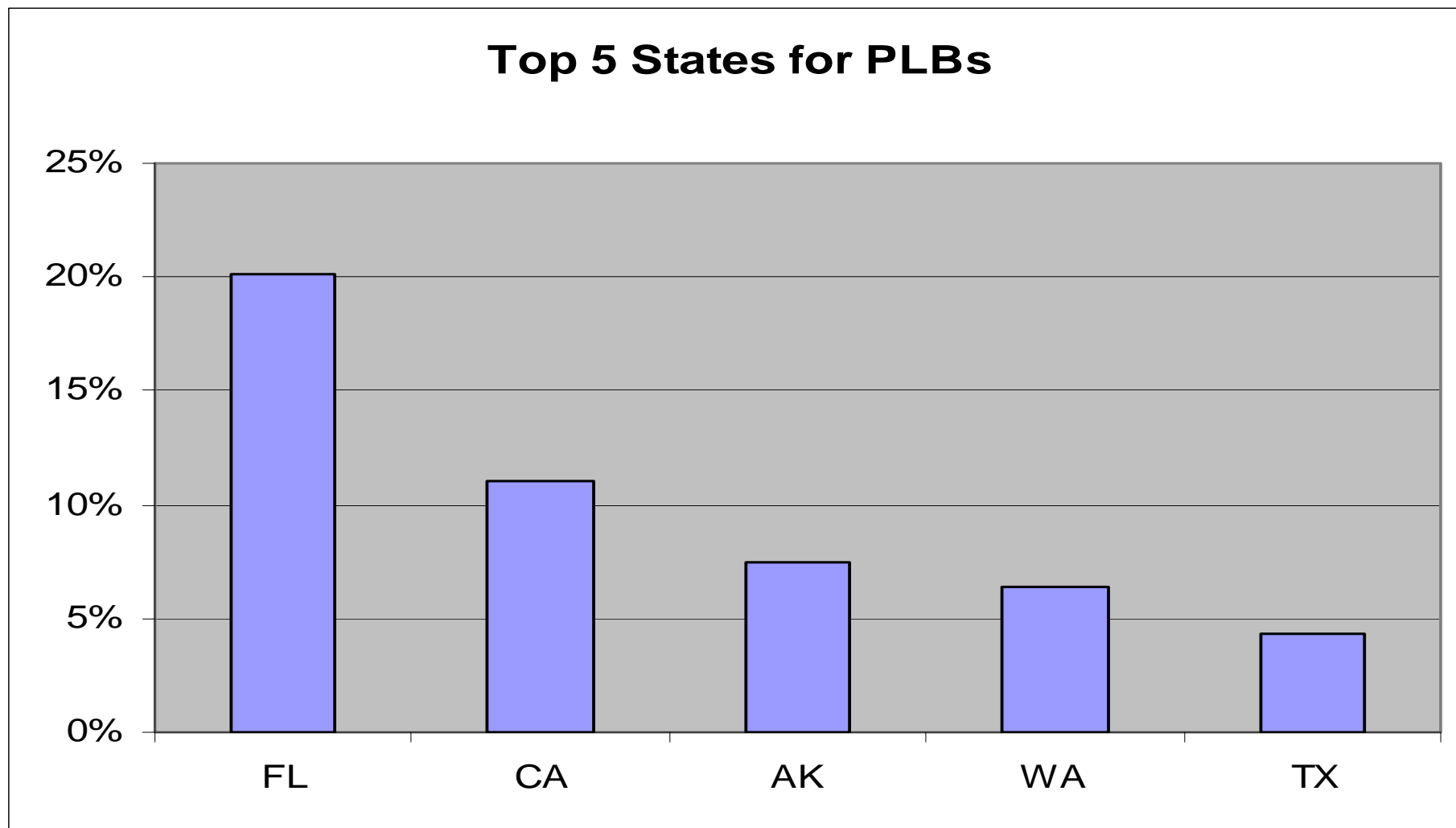
Analysis of Current RGDB

Beacon Registrations Entered 1990 to 2007





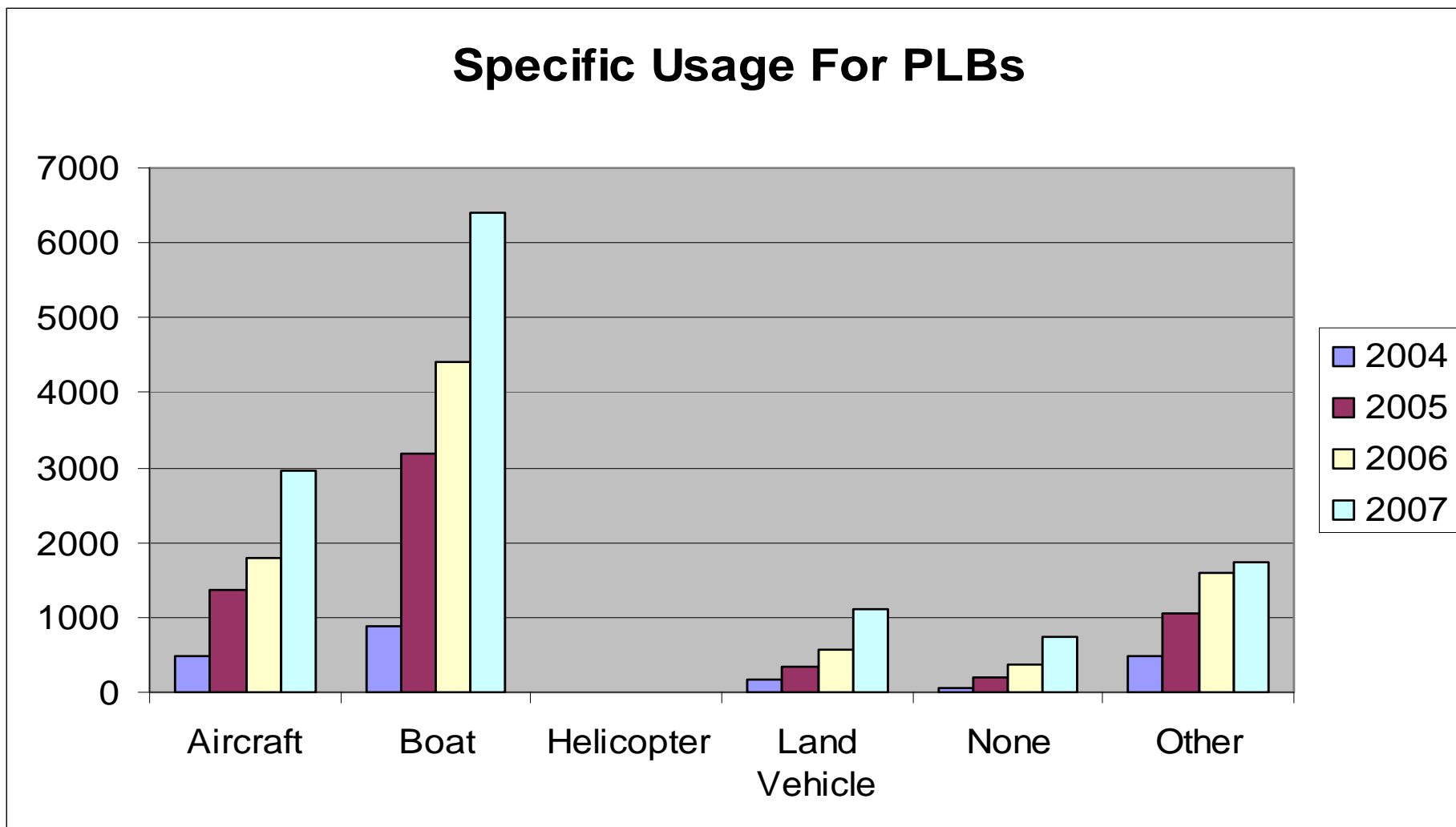
Top 5 States for PLBs





PLB Usage

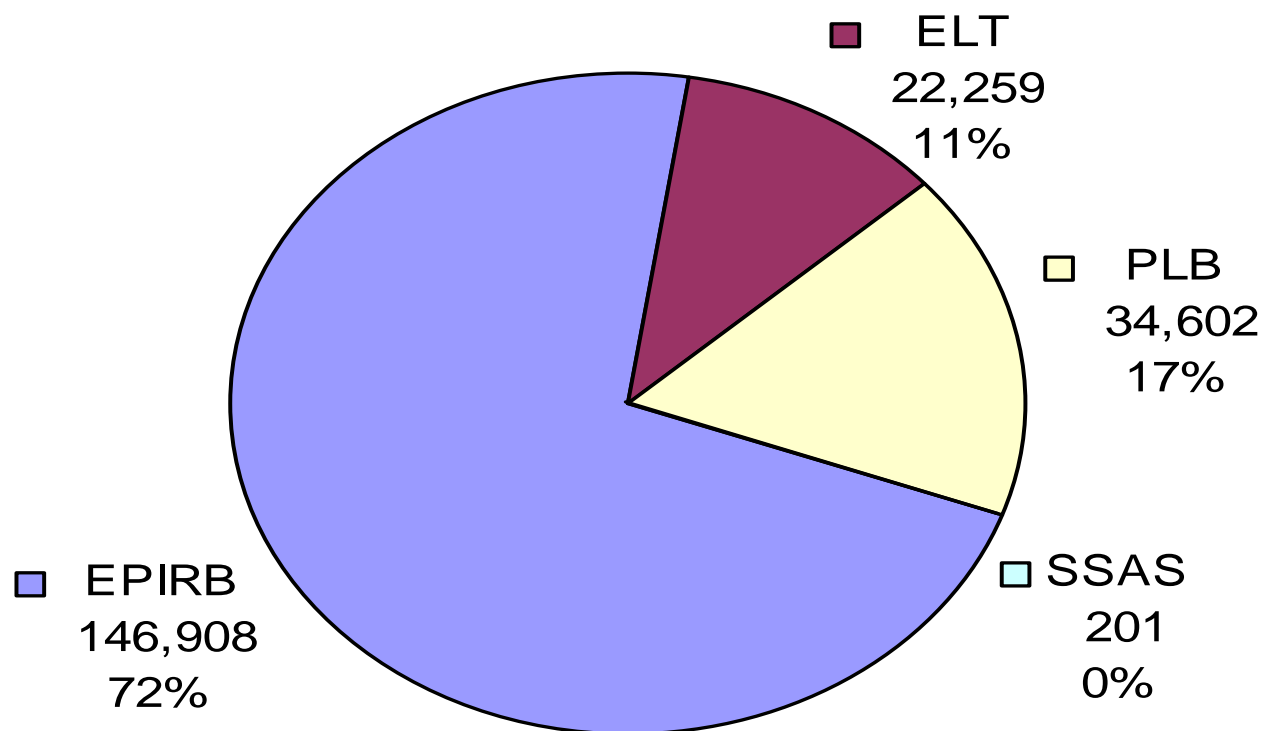
Specific Usage For PLBs



Analysis of Current RGDB



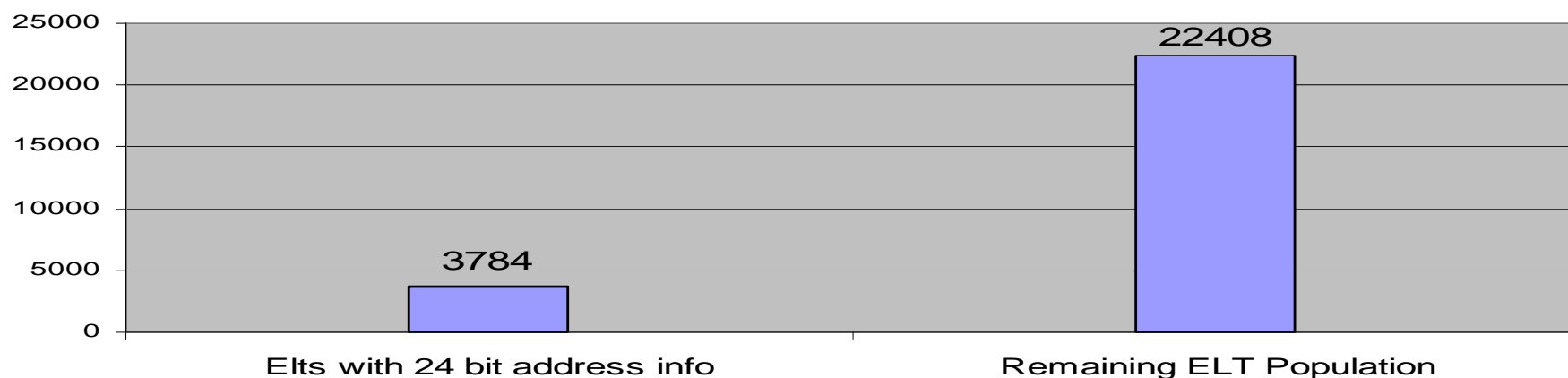
Registration Database Beacon Population Breakdown As of April 23, 2008



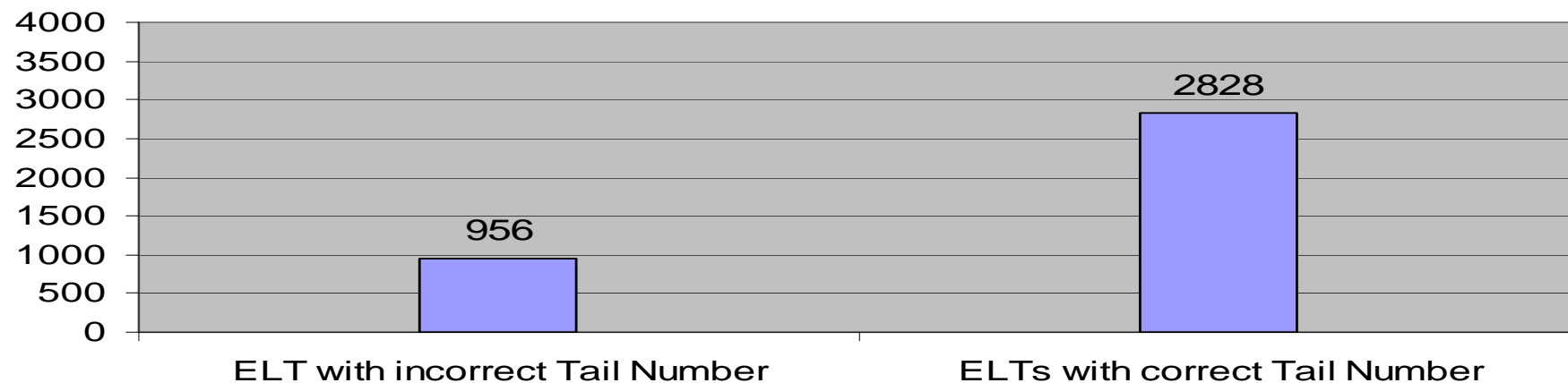
ELT Encoding



ELT with 24bit address values vs Rest of ELT population in RGDB



ELTs with 24 bit address encoded vs information in RGDB



Beacon Population Forecast



U.S. Beacon Population Forecast: 2010 - 2015

Year	2010		2015	
Frequency/Beacons	406 MHz	121.5 MHz	406 MHz	121.5 MHz
ELTs	57,000	298,000	108,000	259,000
EPIRBs	182,000	5,000	222,000	1,500
PLBs	80,000	N/A	125,000	N/A
SSAS	500	N/A	1,000	N/A

Influencing Factors

- Trend of new registrations processed over the last few years
- Phase out of the processing of 121.5/243 MHz signals by February 1, 2009
- Legislation changes for ELTs to be carried on certain aircrafts.
- Legislation that bans the use of 121.5 EPIRBs as of January 1, 2007
- New vessels and aircrafts to be entered into the market
- FAA calculation of all registered aircrafts and not just registered aircrafts that are flown at least one hour in a year. In 2007, there were 130,000 registered aircrafts that were not flown at all.
- Outreach efforts (i.e., NOAA and the National Search and Rescue Committee (NSARC))



RGDB Usage

Registration Usage and Accuracy
As Reported In the IHDB
For Period January 1, 2008 to March 31, 2008

Registration Usage							
	Contributed to Case Resolution	Primary Means to Resolve Case	Total Usage	Registration Data Not Used	Total		
Distress	26	13	39	8	47		
Non-Distress	147	456	603	21	624		
Ceased	33	21	54	66	120		
Total	206	490	696	95	791		
Measure of Usage when Registration is available:			88%				
Distress:	83.0%	Non-Distress:	96.6%	Ceased:	45.0%		

RGDB Accuracy



Registration Accuracy											
			Owner Info			Contact Info			Vessel Info		
			Counts	Percentage	Counts	Percentage	Counts	Percentage			
Accurate			592	86.55%	561	78.90%	621	85.89%			
Not Accurate			92	13.45%	150	21.10%	102	14.11%			
Not Verified			13		69		57				
Totals			684		711		723				
Overall Accuracy when verified:				83.8%							



We Have Moved – New Contact Information For Registration Correspondence



SARSAT Beacon Registration
National Oceanic and Atmospheric Administration
NSOF, E/SP3
4231 Suitland Road
Suitland, MD 20746

Phone: 301-817-4515
Toll free: 888-212-7283
Fax: 301-817-4565



Suggestions On How Beacon Manufactures Can Help



- Inform new and existing beacon owners regarding the option to register, make updates to registration information or re-register the beacons via Web.



- NOAA's official registration forms are periodically updated for various reasons
 - Modifications are not recommended as these forms were created in conjunction with the appropriate Search and Rescue authorities
- Imprint text on the beacon emphasizing owners regarding the mandatory registration with the appropriate registry (What can we do better) on text on these beacons
- If beacon is received for service (i.e., battery replacement), inform customer of a beacon replacement and to contact NOAA to register it as a "New" beacon



Suggestions On How Beacon Manufactures Can Help

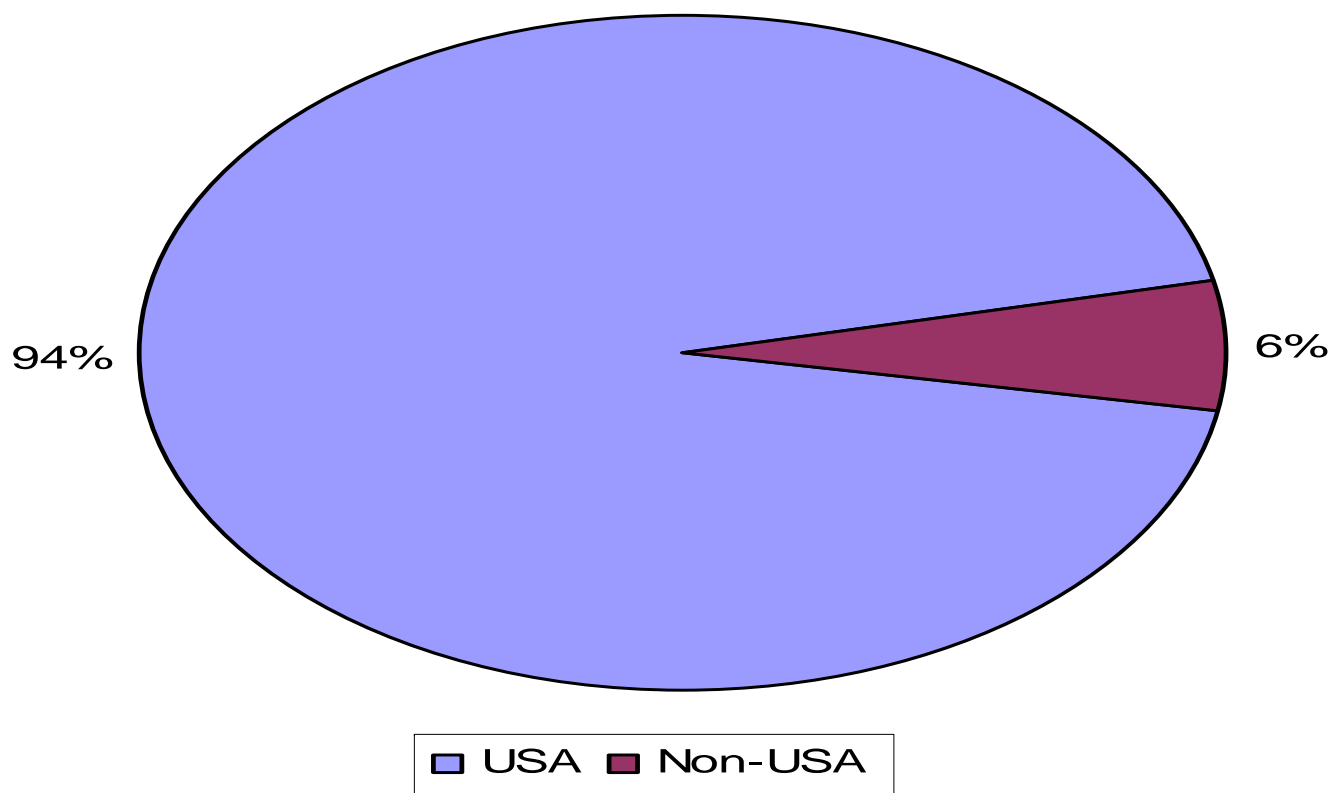


- Importance of Correct Beacon Id
 - A pre-printed beacon id sticker should be provided on the initial registration form.
 - Advantages
 - Ensures users key in the correct beacon id
 - Avoids calls made by beacon owner to manufacturer and NOAA in determining what is the beacon id
 - Beacon Model
 - Owners have difficulty determining the beacon model information
 - Including this information on the beacon id label will avoid calls that NOAA and/or beacon manufacturers receive



Non-USA Mailing Address

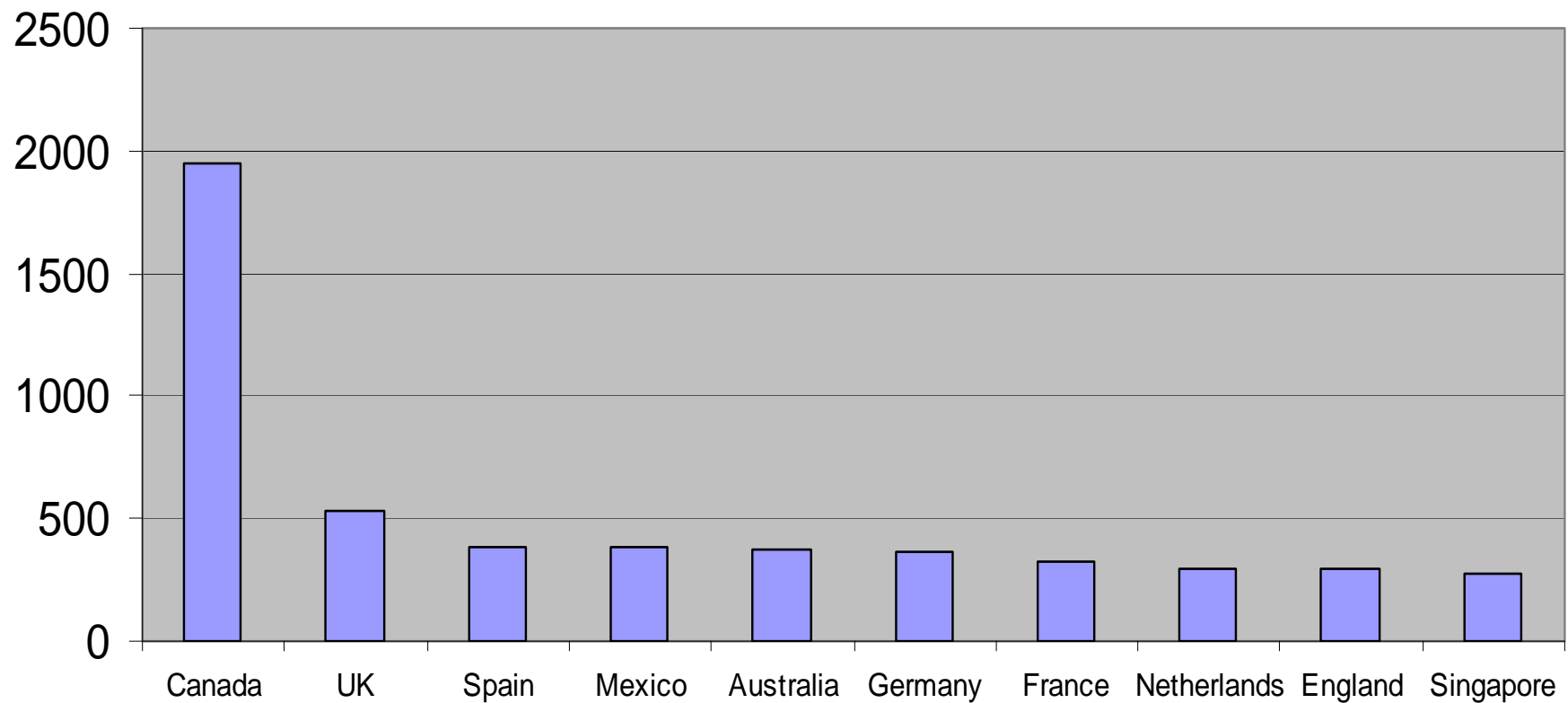
Percent of Registrations With USA vs Non-USA Mailing Addresses





Non-USA Mailing Countries

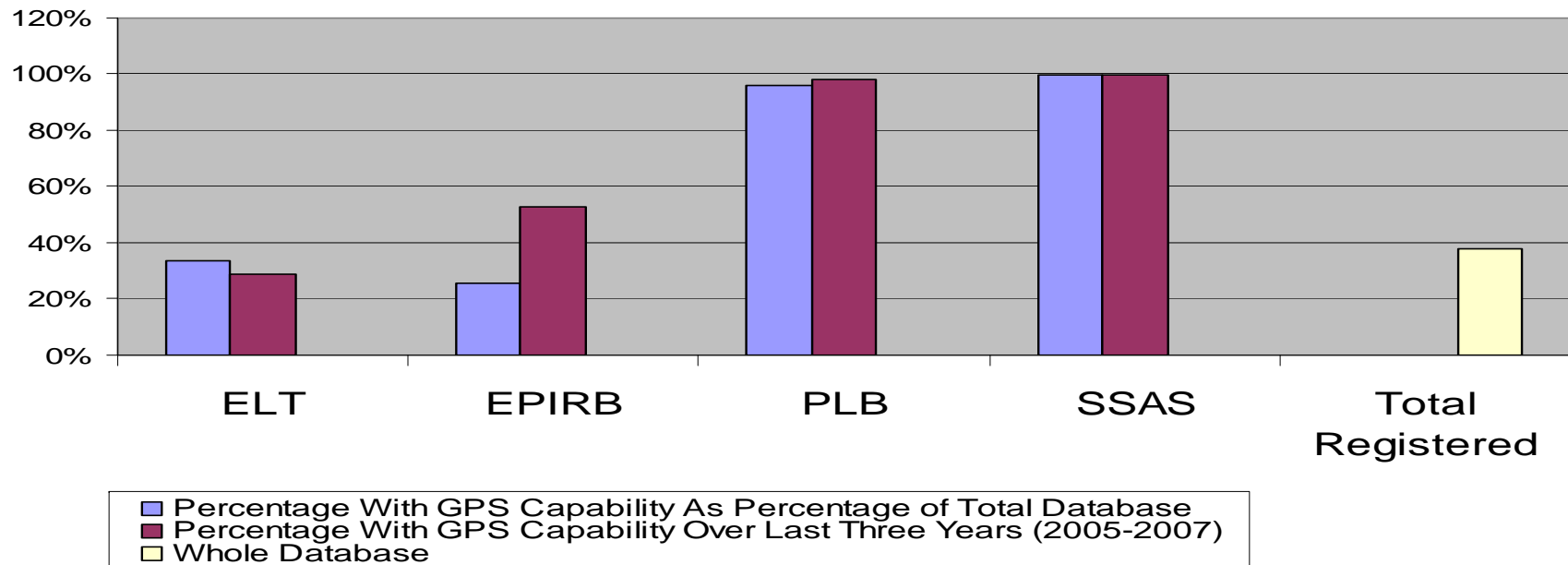
Top 10 Non-USA Mailing Countries



Self Locating Beacons



Self Locating Beacons (Beacons Equipped with GPS Capability) As April 28, , 2008



Self Locating Beacons Performance



Distress Alerts From Location Protocol Beacons for USA RCCs					
	<u>With Encoded Location</u>		<u>Total</u>		<u>Percent</u>
Distress 2006	36		47		76.60%
Distress 2007	56		79		70.89%
Distress 2008 YTD	27		32		84.38%

Beacon False Alert Rate For 2007



False Alert Rate By Beacon Type

(Number of False Alerts/Estimated Beacon Population)

EPIRB 1.53%

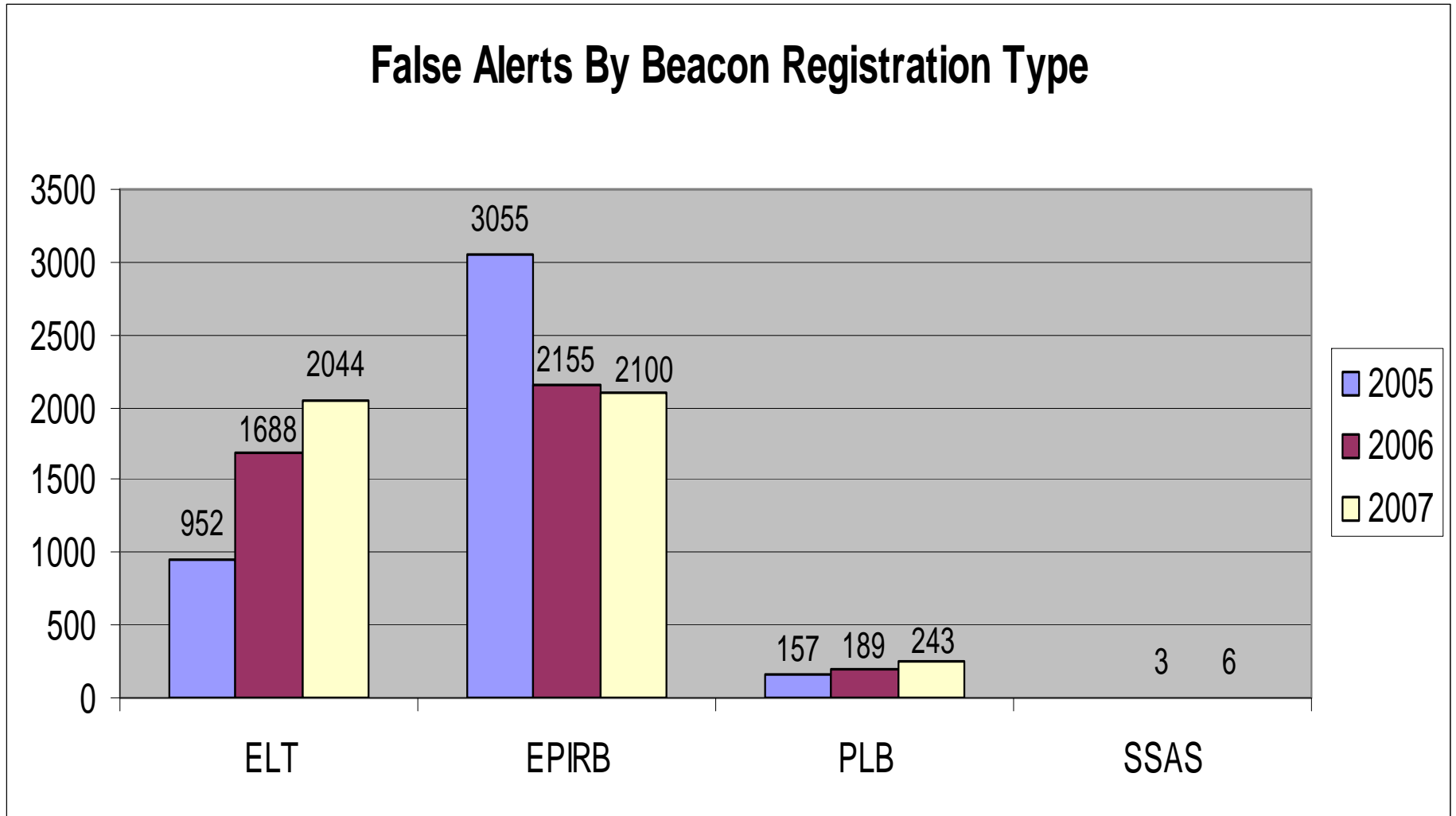
ELT 9.54%

PLB 0.59%

Beacon False Alert Rate For 2007



False Alerts By Beacon Registration Type



Beacon False Alert Rate For 2006



False Alert Rate By Beacon Type vs. Registrations By Beacon Type

	<u>ELT</u>		<u>EPIRB</u>		<u>PLB</u>		<u>SSAS</u>	
	<u>2006</u>	<u>2007</u>	<u>2006</u>	<u>2007</u>	<u>2006</u>	<u>2007</u>	<u>2006</u>	<u>2007</u>
False Alerts	42%	47%	53%	48%	5%	6%		0%
Registrations	8%	10%	81%	74%	11%	16%		0%

Beacon False Alert Rate



**False Alert Rate = False Alerts / Estimated
Beacon Population By Manufacturer and Model**

Beacon Type	Model Number	2004	2005	2006	2007
ELT	Model 53			14.50%	16.80%
ELT	Model 61				16.45%
ELT	Model 1	33.93%	12.93%	13.00%	11.89%
ELT	Model 2	17.65%	7.47%	7.08%	8.86%
ELT	Model 31		6.19%	10.10%	7.36%
ELT	Model 3	13.83%	7.05%	7.74%	7.08%
ELT	Model 51			11.00%	3.48%
ELT	Model 4	7.18%	5.21%	3.02%	3.42%
ELT	Model 65				3.33%
EPIRB	Model 13	1.86%	3.92%	3.08%	2.71%
EPIRB	Model 5	4.53%	4.04%	2.95%	2.68%
EPIRB	Model 36		1.14%	0.54%	2.52%
EPIRB	Model 33		2.10%	2.53%	2.45%
EPIRB	Model 6	2.89%	4.70%	2.51%	2.07%
EPIRB	Model 7	2.83%	2.50%	1.79%	1.97%
EPIRB	Model 10	2.13%	3.52%	1.74%	1.74%

Beacon Type	Model Number	2004	2005	2006	2007
EPIRB	Model 8	2.44%	2.90%	1.67%	1.71%
EPIRB	Model 27	0.59%	1.25%	1.36%	1.53%
EPIRB	Model 26	0.67%	1.81%	1.36%	1.51%
EPIRB	Model 32		2.15%	2.15%	1.49%
PLB	Model 42		0.51%	0.40%	1.40%
EPIRB	Model 43		0.47%	1.42%	1.29%
PLB	Model 44				1.18%
EPIRB	Model 19	1.26%	1.40%	1.22%	1.13%
EPIRB	Model 15	1.45%	1.36%	1.65%	1.08%
EPIRB	Model 34		1.50%	1.55%	1.06%
EPIRB	Model 37		0.96%	1.13%	1.03%
EPIRB	Model 9	2.32%	3.38%	0.78%	1.03%
EPIRB	Model 25	0.67%	0.30%	0.30%	0.97%
EPIRB	Model 11		1.95%	1.29%	0.96%
EPIRB	Model 17	1.40%	1.25%	1.60%	0.79%
EPIRB	Model 24	0.70%	2.40%	0.96%	0.71%

Beacon False Alert Rate



**False Alert Rate = False Alerts / Estimated
Beacon Population By Manufacturer and Model**

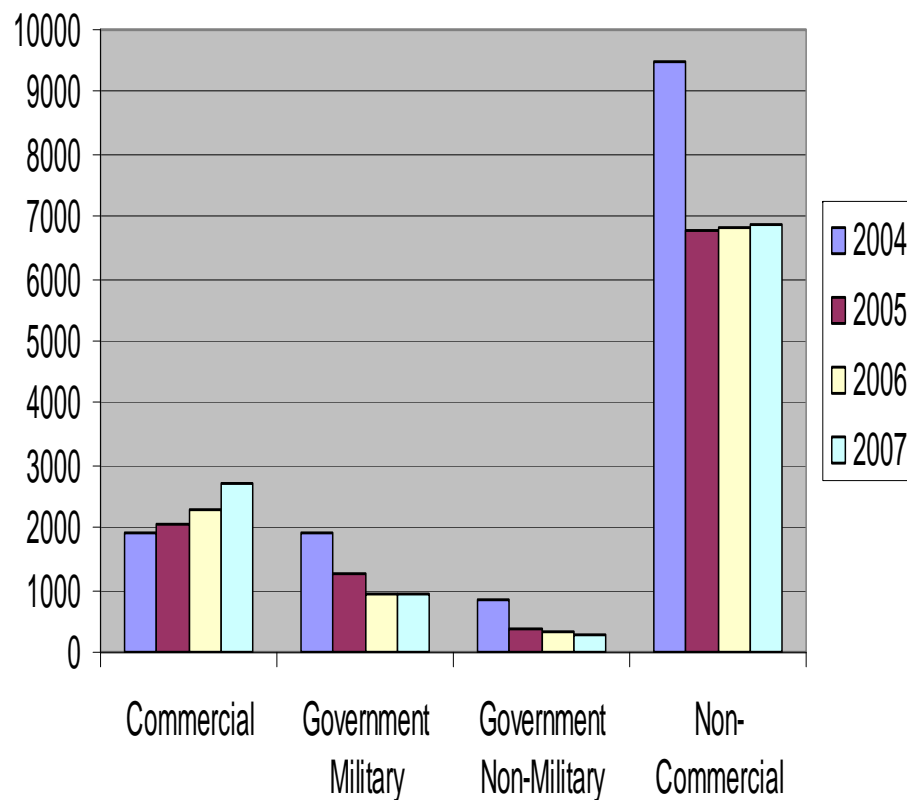
Beacon Type	Model Number	2004	2005	2006	2007
EPIRB	Model 20	1.25%	1.00%	0.76%	0.70%
EPIRB	Model 21	1.21%	0.00%	1.22%	0.60%
PLB	Model 57			0.00%	0.60%
PLB	Model 41		0.51%	0.23%	0.55%
EPIRB	Model 28	0.53%	0.98%	0.48%	0.55%
ELT	Model 39		0.55%	0.45%	0.49%
EPIRB	Model 23	0.95%	1.67%	0.36%	0.47%
EPIRB	Model 16		1.91%	1.11%	0.44%
ELT	Model 55			0.00%	0.42%
EPIRB	Model 22	0.96%	1.61%	1.07%	0.42%
EPIRB	Model 18	1.37%	1.09%	1.00%	0.36%
PLB	Model 46		0.32%	0.31%	0.33%
EPIRB	Model 60				0.31%
PLB	Model 58				0.28%
ELT	Model 50			0.12%	0.27%
EPIRB	Model 64				0.26%
ELT	Model 52			0.68%	0.16%
ELT	Model 48		0.11%	0.00%	0.12%
ELT	Model 40		0.54%	0.38%	0.12%
EPIRB	Model 29	0.18%	0.10%	0.11%	0.10%
PLB	Model 47		0.14%	0.00%	0.09%

Beacon Type	Model Number	2004	2005	2006	2007
ELT	Model 54			1.04%	0.05%
EPIRB	Model 14	1.64%	0.00%	1.64%	0.00%
EPIRB	Model 38		0.75%	0.00%	0.00%
EPIRB	Model 44		0.45%	0.90%	0.00%
EPIRB	Model 49		0.00%	0.18%	0.00%
EPIRB	Model 59				0.00%
EPIRB	Model 62				0.00%
PLB	Model 35		1.20%	0.65%	0.00%
PLB	Model 45		0.41%	1.31%	0.00%
PLB	Model 56			0.00%	0.00%
PLB	Model 63				0.00%
ELT	Model 30		8.14%	11.14%	
EPIRB/ELT	Model 16	1.44%			
EPIRB/PLB	Model 11	2.11%			
PLB	Model 12	1.96%	0.49%	1.25%	

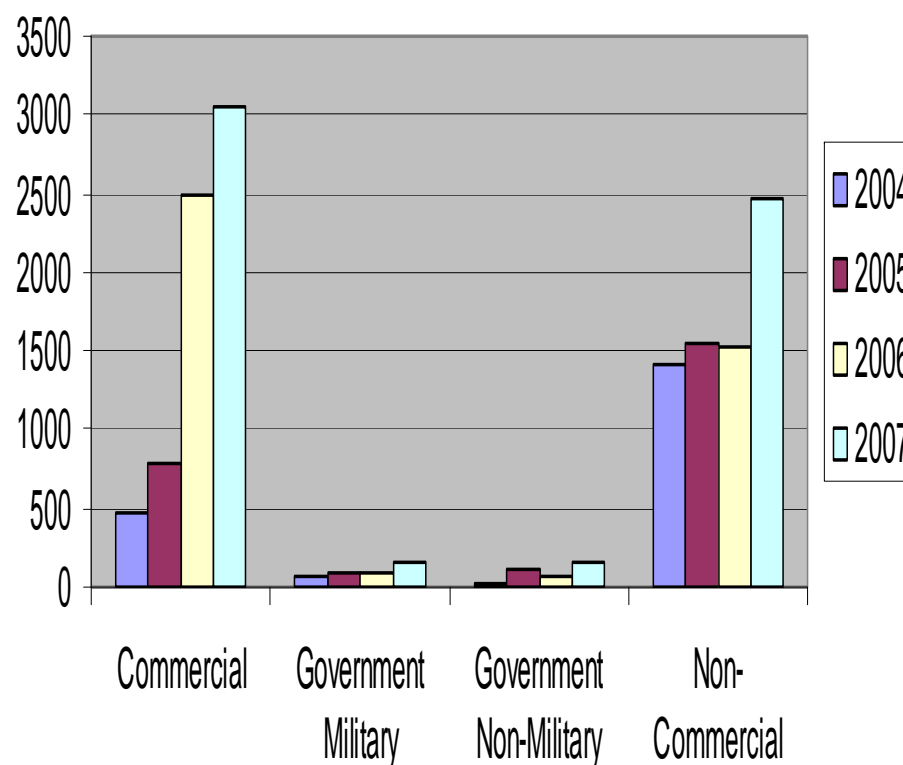


Usage of Beacons

Type of Usage For Epirbs



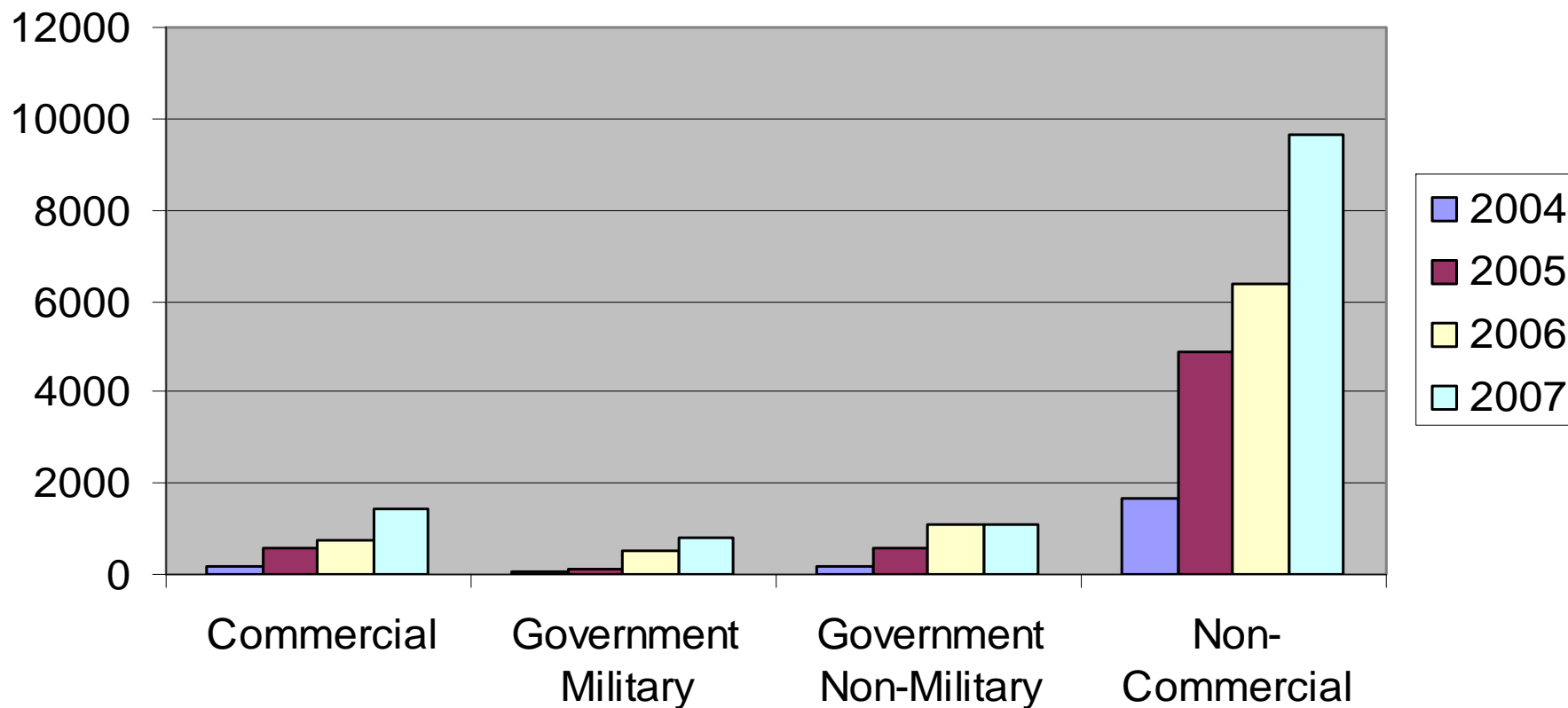
Type of Usage For ELTs





Usage of Beacons

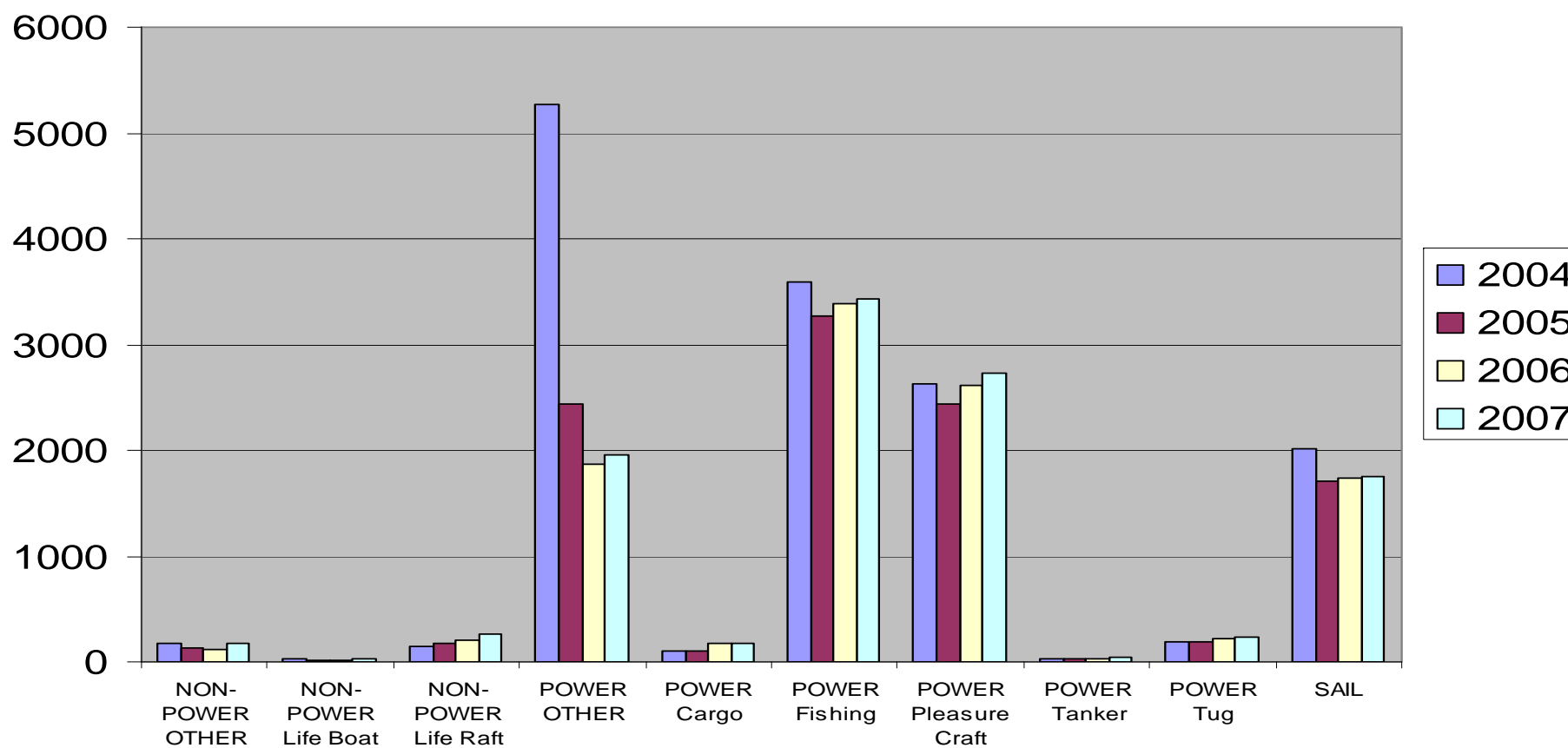
Type of Usage for PLBs





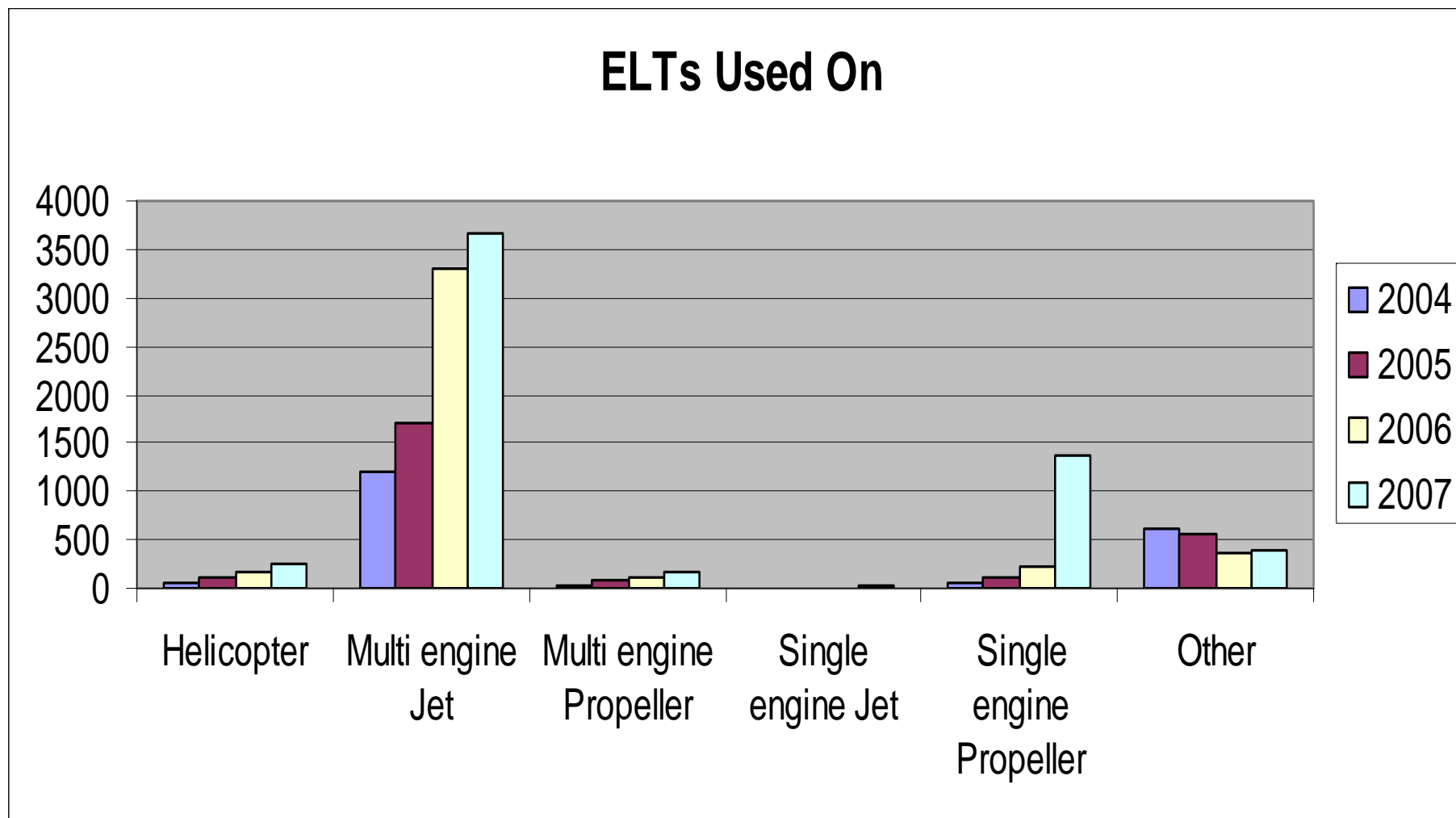
EPIRB Vehicle Usage

Type of Vehicle For Epirbs





ELT Vehicle Usage

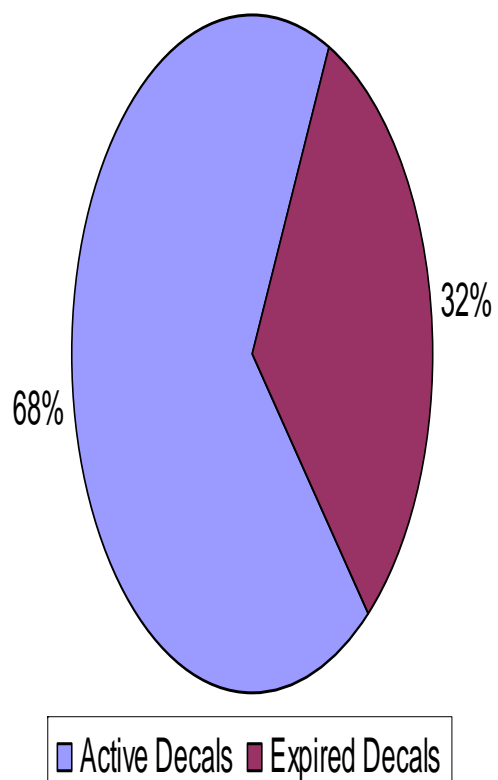




Analysis of Current RGDB



Decals Analysis As Of March, 2008



Special Status Analysis As of March, 2008

